

# Statement of Need



## FIRE-AMBULANCE DEPARTMENT STATION II & SAFETY TRAINING CENTER

---



### **City of Hiawatha**

101 Emmons Street  
Hiawatha, IA 52233

---

# ABOUT THE FIRE DEPARTMENT

---

## FIRE DEPARTMENT MISSION STATEMENT

The mission of the Hiawatha Fire Department is to enhance our community by providing services and programs to protect lives, property, and the environment.

We will accomplish this by being pro-active in providing fire and life safety education and fire prevention programs to reduce the incidence of injury and fire and by providing emergency response services to reduce losses to life and fire when an event occurs.

Hiawatha Fire and Rescue provides the following services to the City of Hiawatha and the southern half of Monroe Township as well as supplemental response to surrounding communities:

- Fire Suppression
- Ambulance Service
- Operations Level Hazardous Material Response
- Fire and Life Safety Education
- Automobile Extrication
- Natural Disaster Response

- Organized in 1946
- Constructed building at 60 10th Avenue in 1973
- Current station remodeled and expanded in 1999-2000
- Began ambulance service in 2005
- Fire Department has the only fire-based ambulance service in the area
- Fire Department runs approximately 2,200 fire and EMS calls per year
- Predict a 3-6% annual increase for future fire and EMS calls

## CURRENT FIRE DEPARTMENT STAFF

1 Full-Time Fire Chief  
2 Full-Time Deputy Chiefs  
7 Full-Time Fire-Medics and Paramedics  
2 Captains  
4 Lieutenants  
5 Part-Time Fire-Medics and Paramedics  
42 Volunteer 1st Responders

*Staff are split into 6 Duty Crews*



# STATEMENT OF NEED

---

The Hiawatha Fire Department has seen calls for service more than double in the past ten years. This increase in calls is due to both residential and commercial growth within the city. During this time, the city has seen tremendous growth to the north with city boundaries crossing County Home Road. This growth has dramatically increased the service demand area for the Fire Department. As the Hiawatha community evolves, the department has outgrown the ability to provide fast and efficient services to the entire community and its citizens. The department has also outgrown its current station due to increased staffing and size of equipment.

The Fire Department can no longer efficiently provide services to the entire community or adequately train staff. We are out of space at the current station, which also needs improvements. Adding a second station, constructing a training center, and remodeling the current station allows us to provide services to the entire community, train our first responders, keep staff and volunteers safe from carcinogens, and continue to recruit and retain the best volunteer and career members for the city into the future.

"The City of Hiawatha has experienced remarkable growth in size, population, and economic development over the past several years. The Fire Department has seen a corresponding growth in demand for fire and ambulance services. The addition of a second fire station is needed for the community and the fire department."

**MATT POWERS, FIRE CHIEF**

"Firefighters in Hiawatha are grateful that the city leadership is working to provide much needed updates to the fire department facilities. In November 2021, the Hiawatha Firefighters Association formally expressed support of the current plan for a 2nd fire station, added training facilities, and upgrading of the current fire station. We appreciate the community's support of their fire department and its members."

**JOHN ZLABEK, PRESIDENT,  
HIAWATHA FIREFIGHTERS ASSOCIATION**

---



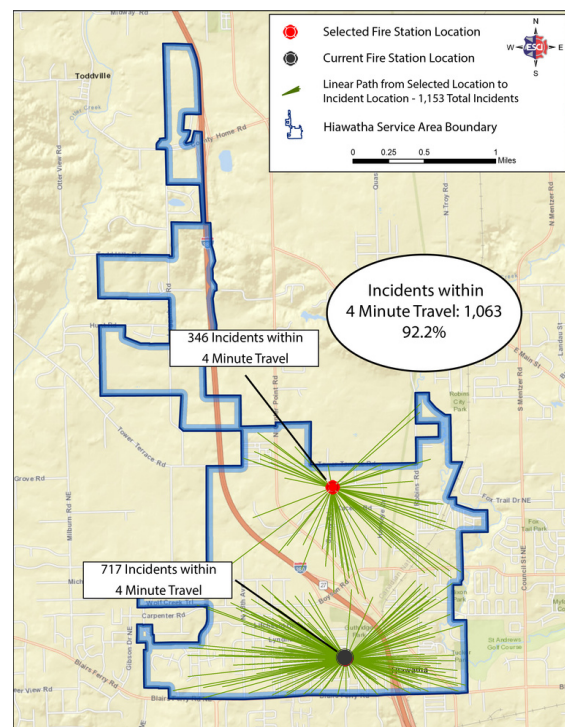
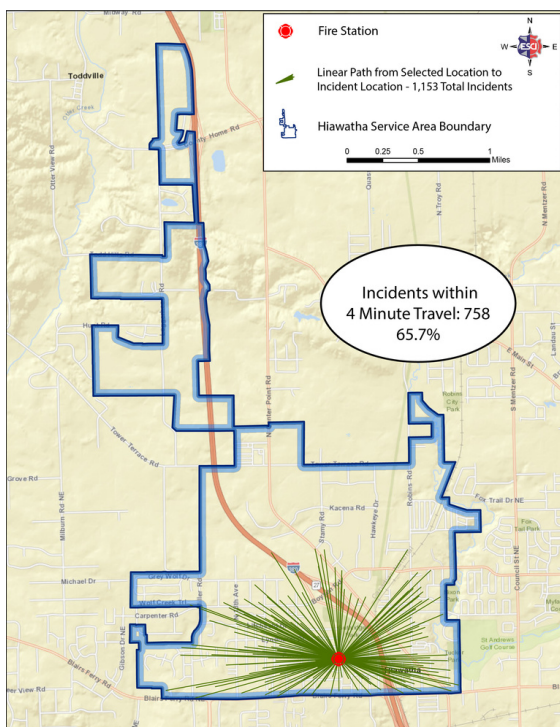
# EVERYONE DESERVES THE SAME LEVEL OF EMERGENCY SERVICES

We believe everyone in Hiawatha deserves the same level of emergency services regardless of where you live or where your business is located. Fire Station II will enable your fire department to provide four (4) minute emergency services response time to protect lives, property, and the environment throughout Hiawatha.

Hiawatha's fire station, located at 10th Avenue and Emmons Street, is currently responding to 65.7% of Hiawatha emergency incidents within four (4) minutes. Building a second fire station located at Stamy Road and Metzger Road, will significantly increase the four (4) minute response time to 92.2% of all emergency incidents within Hiawatha.

Enhancing Hiawatha's four (4) minute response time to 92.2% of all emergency incidents with two strategically located fire stations will exceed the NFPA 1710 standard of 90%.\*\*\*

*\*\*\*Note - the National Fire Protection Association (NFPA) 1710 standard states that "a fire department's fire suppression resources shall be deployed to provide for the arrival of engine company within four (4) minutes to 90% of a city's incident"*



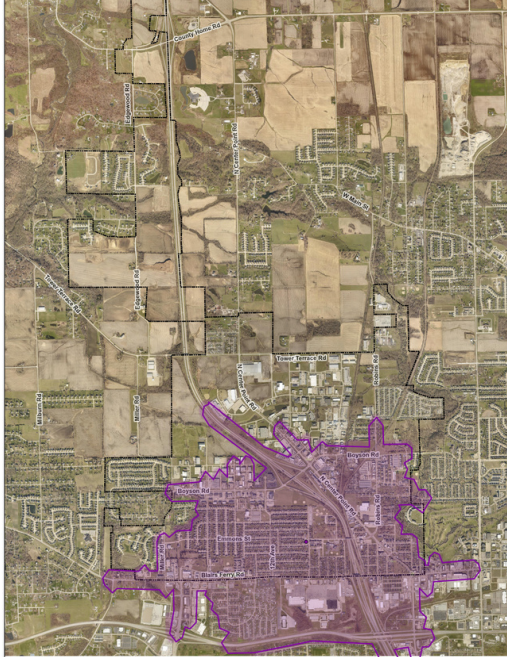


# 1

## EVERYONE DESERVES THE SAME LEVEL OF EMERGENCY SERVICES

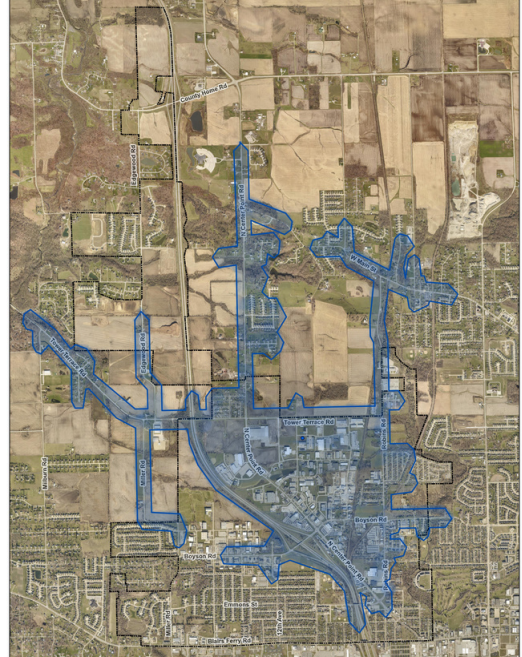
---

STATION I



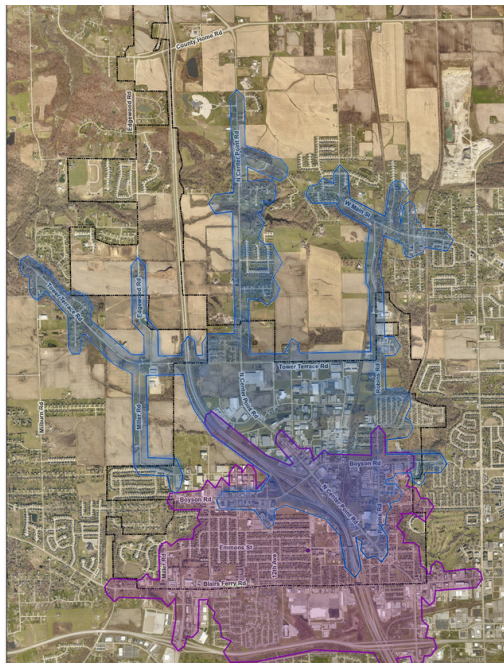
Station I, located at 60 10th Ave, is currently responding to 65.7% of all emergency incidents within 4 minutes. This map shows the 4 minute response area of Station I.

STATION II



Station II will be strategically located at 1550 Stamy Road to service citizens and businesses in the northern part of the city. This map shows the 4 minute response area of Station II.

COMBINED



Between Station I and Station II, Hiawatha first responders will arrive to 92.2% of emergency incidents within 4 minutes.

---



# EVERYONE DESERVES THE SAME LEVEL OF EMERGENCY SERVICES

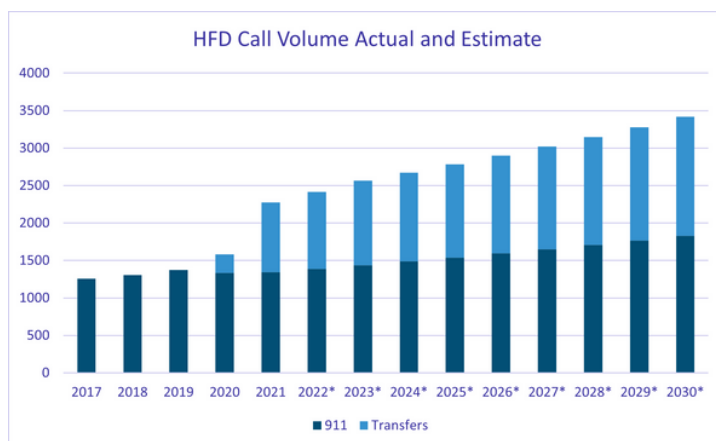
---

## Station I continues...

- Providing coverage of older part of town
- Proximity to affordable housing for volunteer-first responders
- Operating in a high visibility location in the community; close to school and park
- City's commitment to Rainbow Estates Neighborhood
- Providing coverage of Blairs Ferry corridor

## Station II adds...

- Increased geographical coverage to 92.2%, thus reducing response times across city
- Redundancy in case of unforeseen circumstances; if one station is heavily damaged by a storm, the other is available still
- Distribution of resources and increased visibility
- Meeting current and future needs of the department and city
- Proactively addressing future growth with Tower Terrace Road expansion



# 2

## INCREASE SAFETY AND WELLNESS OF OUR FIRST RESPONDERS

---

### Training Improvements

The proposed Training Facility provides adequate space for both hands-on and classroom training.

Improvements will allow first responders to keep up to date with current topics and continue to be proficient at skills needed for both medical and fire scenes.

Space for physical and mental health activities to meet demands of the profession

### Wellness Improvements

Spacing needs for first responders are met by adding private sleeping quarter accommodations in both Station I and in Station II

Station II will provide workspace areas for members to work or study at while they are on duty at the fire station after hours.

### Spacing Improvements

Equipment storage space for hoses

Adequate parking for equipment

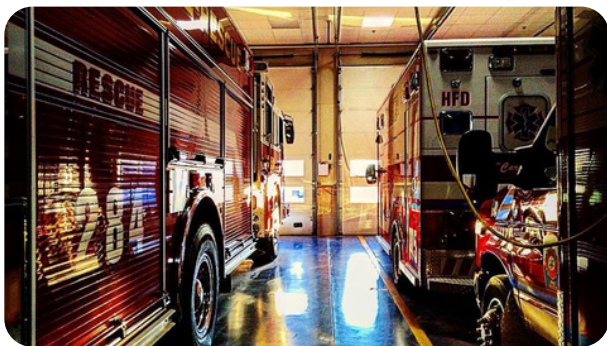
Additional parking for volunteer first responders, full time staff and part time staff

Drive-through bays

### Safety Improvements

The layout of the station is designed to limit cross-contamination and exposure of hazards between the apparatus bay and the living/work areas of the station

The Station II design and Station I remodel are designed to limit and reduce the firefighter's exposure to known carcinogens\*\*\*



\*\*\*Note - According to research by the Center for Disease Control (CDC) and the National Institute for Occupational Health and Safety (NIOSH), Firefighters have a 9% higher risk of being diagnosed with cancer and a 14% higher risk of dying from cancer than the general US population.

# 3

## NO TAX INCREASE REQUIRED

---

This project will increase the safety of our community and the safety of our volunteer first responders all while avoiding an increase in our property tax levy.

Local Option Sales and Service Tax (LOSST) dollars, passed by 2021 voters, will be utilized.



FY	Funds
21	\$500,000
22	\$500,000
23	\$1,250,000
25-34	\$4,950,000
Total	\$7,200,000

---



# PROJECT SCHEMATICS

---

The new 18,610-square-foot Hiawatha Fire Station No. 2 features four double-deep apparatus bays, enlarged training facilities, living quarters, administrative areas, a training tower and expanded apparatus support. Careful thought was put into the separation of administration, living, and apparatus spaces ensuring the health, safety, and comfort of all building occupants. The west end of the building houses administrative and living functions which are separated by two vestibules from the apparatus area on the east side of the building. This maintains separation of Hot Zones, equipment returning from a fire scene, and Cold Zones, where only decontaminated personnel and equipment are allowed.

The Cold Zone includes administrative offices, conference and training rooms, public spaces, and storage areas. Living quarters feature a generous, and private dayroom along with an adjacent patio which provide opportunities for relaxation and socialization year-round. The private sleeping quarters and separate men's and women's shower rooms support fluctuations in the department's staff demographics. Access to the mezzanine exercise space and Hot Zone is directly adjacent to the dayroom to decrease response time.

The Hot Zone includes 80-foot-deep, drive-thru apparatus bays as well as a training wall connecting to the mezzanine, with support spaces including decontamination, SCBA, workroom, gear storage, hose-drying tower, and EMS storage areas.

The station's exterior is dominated by the two intersecting masses of the administrative and living quarters, and the two-story apparatus and mezzanine space. The majority of the building's façade is clad in masonry and metal panels, materials selected for their appearance and performance. The four, double-deep apparatus bays and mezzanine area feature glass doors and windows which flood the space with natural light. Careful thought was also put into maximizing natural lighting in the living quarters and administrative areas which resulted in support spaces including restrooms, storage, mechanical, shower, and restroom areas being pushed to the building interior leaving space at the perimeter for occupied spaces such as office, day rooms, and training facilities.



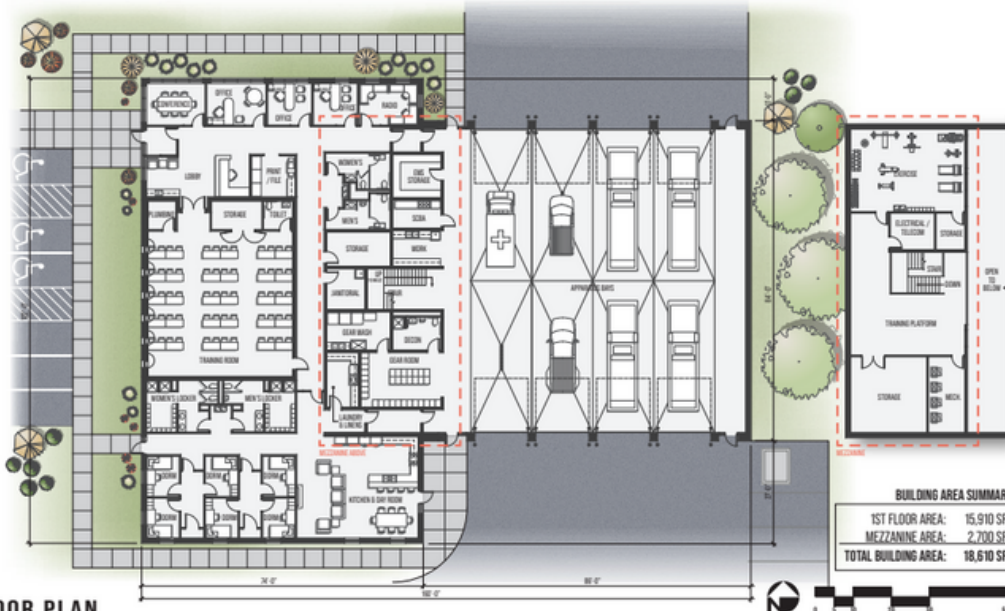
# PROJECT SCHEMATICS



## HIAWATHA FIRE STATION NO. 2



Facility provides adequate storage for equipment, private sleeping dorms, workspace areas, and decontamination zones for added safety.



FLOOR PLAN

## HIAWATHA FIRE STATION NO. 2



# PROJECT SCHEMATICS

Phase II will add a needed classroom for trainings and meetings.

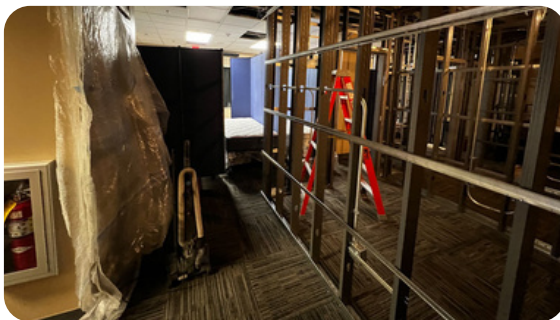
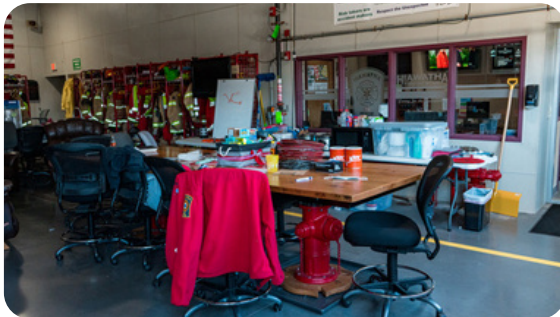


Phase I, which is currently underway, is adding private sleeping dorms for staff and volunteers.

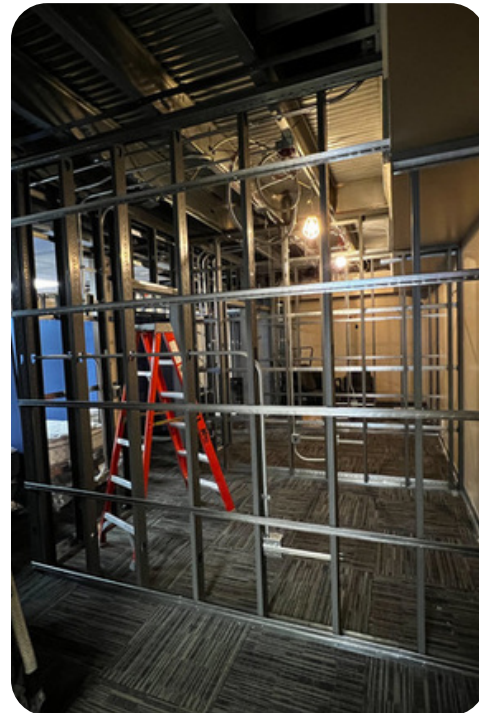
BUILDING AREA SUMMARY	
1ST FLOOR AREA:	8,700 SF
MEZZANINE AREA:	1,450 SF
TOTAL BUILDING AREA:	10,150 SF



## HIAWATHA FIRE STATION NO. 1 REMODEL



Phase 1 Remodel Photos

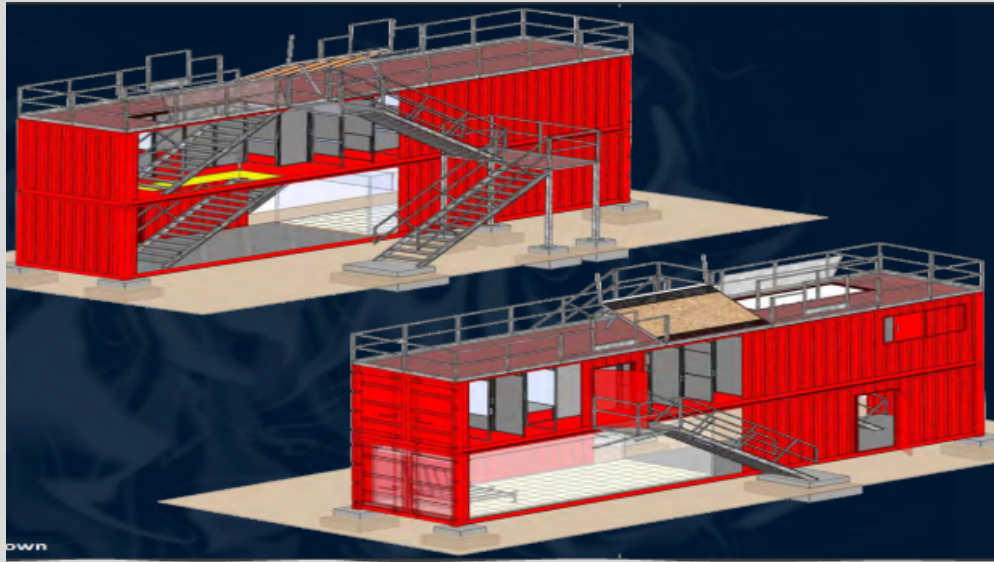




# PROJECT SCHEMATICS

---

A separate Fire Department specific training facility is vital to ensure our first responders are trained and prepared to perform the skills and tasks that are required of them. This specialized training facility provides a realistic environment and conditions to train in that can not be accomplished by other means. The facility will be constructed to be specific to our community and our community risks.



## TRAINING FACILITY

Located at Public Works Facility  
1410 Robins Road

### Advantages for constructing a Fire Department Training facility:

- Provides a location and facility to train that is not in a residential neighborhood
  - Allows for training new First Responders in a controlled setting
  - The facility will be designed specifically for training firefighters so we do not have to use buildings not designed for fire department training which can cause damage to those buildings.
  - Can be used for training skills related to all hazards that the fire department responds to including fire calls, rescue calls, EMS or Ambulance responses
  - Provides a location to store, use and maintain specific props related to high-risk, low frequency tasks that need to be practiced
  - Location to perform large group drills
  - The facility will be specific to our community needs
  - Location to train with our Automatic and Mutual aid partners.
  - Location provides the ability to train while members are on duty, allowing them to remain available to respond to emergency calls
-