

**AV PACKAGE FOR THE HIAWATHA LIBRARY
RENOVATION AND EXPANSION PROJECT
2019-2020**

The City of Hiawatha and the Hiawatha Library Board of Trustees have completed its design and specifications for the Hiawatha Public Library renovation and expansion project located at its currently location at 150 Willman Street.

The Hiawatha Public Library Board of Trustees entered into a construction agreement with Garling Construction of Cedar Rapids, Iowa on March 12, 2019. Construction begins this month.

The project will be completed in two phases. Phase I begins with a 13,457 square feet expansion, Following the expansion, materials and equipment will be moved to the newly constructed portion of the library, and Phase II renovates the existing 8,543 square-foot structure.

The project will include design review of the expansion and renovation of the building to determine the best approach to meet the AV needs of the building, patrons and staff. Upon determining those needs the bid process will include materials, equipment, installation and the appropriate cost associated.

The expectations for the Audio Visual needs in the facility will include but not limited to:

1. A close working relationship between the audio visual firm, Fusion Architects and City Staff in the planning, design, implementation of the system for the renovated/expanded facility.
2. Planning related to short, intermediate and long term audio visual issues and needs within the Library.
3. Configuration of the audio visual control facilities, data cable and data ports in construction of Phase I and Phase II and in coordination with telephone and other structural utilities.
4. An AV package would include future A/V equipment wiring as indicated in the AV package drawings, speakers, display monitors/mounts, microphones, touch screen control panels, switching equipment, programing.
5. Garling Construction as per contract will provide future equipment pathways (conduit), wiring, data receptacles (outlets) and wiring, wall and floor boxes and receptacles, door position switches tied to fire alarm, rough in and cabling for camera, rough-in for card readers, rough-in for power supplies, doorbell with speaker, wireless routers, panic buttons and ADA door actuators and openers.
6. Construction plans can be located on the city of Hiawatha's website (Hiawatha-iowa.com) under engineering as projects/bids.

Written proposals must be submitted to the City of Hiawatha Iowa, City Administrators Office no later than **July 1, 2019 no later than 5:00 P.M.**

Each submittal shall include the following minimum information:

- Four bound originals of the completed proposal.
- Name, address, telephone number (voice and fax), and e-mail of the firm's primary contact.
- A description of previous firm experience with Audio/Visual System set up, maintenance and planning including references containing Name, telephone number (voice and fax), and e-mail of primary contacts.
- Information about the personnel who will be performing the anticipated work, the qualifications and experience on similar projects of the personnel, a listing of similar types of projects and references for said projects.
- Examples of any completed projects of similar nature.
- List of any sub-consultants to be used and the work they will perform.
- A comprehensive approach to the proposed work and a detailed timeline showing completion of the required scope of services.
- Summary of the firm's ability to provide personnel to meet the proposed schedule.

Selection shall be by Quality Based Selection, including proposal review, and reference checks.

Evaluation factors to be used by the Selection Committee shall include specific expertise and availability of key personnel, grasp of project requirements, past performance, cost proposal, approach to performing services, qualifications, and references from previous clients.

The selection process will include interviews for those who provide a reasonable, responsible, and responsive proposal.

The selected consultant will prepare a Draft Professional Services Contract and participate in on-site negotiations to determine the final scope of services and submit all cost, technical, or other related changes made to the proposal. It is expected a consultant will be selected by City of Hiawatha Library Board of Trustees on or before **July 9, 2019.**

City Clerk in the City Administrator's Office will receive bids on July 1, 2019 at Hiawatha City Hall no later than 5:00 P.M. Bids will be received and opened at a public meeting as provided in the posted notice and the results of said bids shall be considered at the meeting of this Board on July 9, 2019 at 7:00 P.M.

The selection process will include interviews for those who provide a reasonable, responsible and responsive proposal.

The City of Hiawatha/Public Library Board of Trustees is not committed to entering an agreement or contract regarding the scope of services included in this proposed request.

The City of Hiawatha/Public Library Board of Trustees reserves the right to reject any and / or all proposals and to discontinue contract negotiations at any time without bias.

The City of Hiawatha/Public Library Board of Trustees is not financially responsible for any costs incurred in the preparation of a proposal.

The Scope of Services may not include all services required to complete the project.

The consultant shall be responsible for determining the extent of information needed to reach an appropriate project completion.

If you have any questions regarding this request for proposal, and to schedule a pre-proposal meeting, please direct calls to:

Kim Downs
City Administrator
Hiawatha Public Library
101 Emmons Street
Hiawatha, Iowa 52233
Phone: 319-393-1515
Fax: 319-294-1604
E-Mail: kdowns@hiawatha-iowa.com

INFORMATION AND FLOOR PLANS

- **Community Room – Room Size = Room ‘A’ 34’8” X 25’6”;** Room ‘B’ 41’9” X 33’8”
Room is programmed to have a movable dividing wall (see attached floor plan).

- Audio System requirements:

The goals of this area are to allow the Community Room space(s) to be used as a multi-use area for a variety of public activities including, but not limited to children’s movie nights, craft programs and training programs, etc.

Audio System for room(s) with microphone outlets around the room can either be wired or wireless microphone (handheld, no lav please) please bid on both.

Development and installation of a sound system with necessary equipment to provide adequate sound coverage for community center space(s).

- Video Requirements

The goals of this area are to provide a reasonable viewing environment for patrons utilizing the Community Room space(s) for a variety of activities.

Projector location(s) and four TV monitors and location(s).

Conference Room(s) – typical layout

The goals of this area are to allow meeting participants to use in house fixed location technology ports to provide audio visual presentation capabilities.

1. Board table top computer access with projector connections.
2. TV monitor(s) strategically located to maximize viewing capabilities.
3. Sound system that works in conjunction with the video system.
4. Associated wiring schematics and installation coordinated with Fusion Architects, City Staff and General Contractor.

Open Areas to be consider – i.e. front entrance, children’s area services, lower level and youth services.

Any other device that we may be missing from the list that you feel we need to meet our objectives.

SECTION 274100 - AUDIO VIDEO SYSTEMS

PART 1 - GENERAL

1.1 SCOPE

- A. Perform all Work required to provide and install the required AV equipment and cabling indicated by the Contract Documents with supplementary items necessary for proper installation.
- B. Types of AV systems included in this Section
 - 1. Extra Large Divisible Conference Room
- C. Work included in other Sections
 - 1. Empty conduit, junction boxes, wall boxes, ceiling boxes, floor boxes, fittings, etc. These items will be provided and installed by the Electrical Contractor.
 - 2. Power and power wiring to all A/V equipment. This will be provided and installed by the Electrical Contractor.
 - 3. Refer to the plans for a Responsibility Matrix for division of work.

1.2 CONTRACTOR'S RESPONSIBILITY

- A. Thoroughly review the Contract Drawings and Specifications with regard to the work specified in this Section to insure its completeness. If there are questions or if the AV Contractor notes any discrepancies in the contract documents, notify the Engineer in writing a minimum of five (5) days prior to bid submission.
- B. The AV Contractor shall visit the site prior to submitting a bid. If there are any existing conditions that will prevent or impede the work as specified, notify the Engineer in writing a minimum of five (5) days prior to bid submission.
- C. Field verify all dimensions affecting the work. The AV Contractor will be responsible for any dimensional variances between the contract documents and actual field conditions.
- D. Coordinate all work with other trades to avoid project delays.

1.3 SHOP DRAWINGS

- A. Shop Drawings shall be submitted to the Engineer for approval in accordance with the requirements of the Contract Documents.
- B. Provide the following before installation of any equipment
 - 1. Functional schematics of each system
 - 2. Mounting methods

3. Detailed dimensioned drawings for all custom fabricated material
4. Details of any deviations from Contract Documents
5. Manufacturer's specification sheets
6. Lists of equipment for approval
7. Dimensioned plans showing locations of all equipment provided by the AV Contractor.
8. Contractor to provide touch panel Graphical User Interface design for the Engineer and Owner's approval. If Owner has panel design standards, Contractor shall coordinate to implement into final product.

1.4 QUALITY ASSURANCE

- A. Offers will be considered only from a Contractor who has at least five (5) years of experience in the furnishing and installation of similar Systems; the contractor shall submit names of three (3) similar sized projects installed by him within the past five (5) years. The Contractor shall be an authorized dealer of all major equipment components supplied. In addition, the Contractor must employ competent electronics technicians to fabricate, install and test such equipment in a manner that clearly indicates that the technicians are knowledgeable in the complexities of the A/V systems.
- B. The Contractor shall supply to the Owner certification that the satisfactory operation of installed systems shall be guaranteed and warranted for a period of one (1) year from date of final acceptance by the Owner. The warranty includes all replacement parts, adjustments and service required to ensure continual satisfactory performance of all the Systems.
- C. Substitutions: The AV Contractor will obtain approval for alternative equipment and materials in writing from the engineer a minimum of ten (10) days prior to the bid date.

1.5 RECORD DOCUMENTS

- A. After substantial completion of the specified systems and before final acceptance of these systems by the Owner or his representative, the Contractor shall furnish the Owner the following:
 1. Systems operation manuals, equipment operation manuals, maintenance data, descriptive literature and other information that is pertinent to the operation and performance of the Systems.
 2. Manufacturer's guarantees and warranties and Contractor's guarantee as previously called for in Paragraph 1.4 – B.
 3. Point-to-point wiring diagrams showing interconnection of all equipment.
 4. Complete functional schematics describing the inter-relationship of all active and passive components.

1.6 BID SUBMITTAL

- A. Bids submitted by Contractor must be in complete compliance with the terms and requirements of the Specification describing the equipment, functions, and performance. Any exceptions to, omissions from, and modifications to the Specification, that are contained in the Bid Submittal, will be considered unacceptable to the Owner.
- B. Pricing shall be all-inclusive for a turn-key, fully functional A/V system. Pricing shall include all costs, including but not limited to: material, labor (including installation and programming), travel expenses, taxes, warranties, licensing fees, etc.
- C. Contractor shall provide as a separate attachment an annual service agreement proposal that would take effect after the initial warranty period. Provide terms and conditions, including labor rates and service level options.
- D. In addition to the Bid Submittal requirements described the Instruction to Bidders, the AV Contractor will include the following information:
 - 1. Itemized material list with complete make and model numbers of all equipment and material for each type of room. Provide summary pricing in the format shown below:

Example:

Large conference room

- a. System price (Base bid - Creston AV Control System)
- b. System price (Alternate bid - Extron AV Control System)
- c. Voluntary alternate pricing

1.7 ALTERNATES

1.8 FUNCTIONAL REQUIREMENTS

- 1. Extra Large Divisible Conference Room
 - a. General Requirements: The A/V system for these conference rooms will consist of the following items:
 - 1) One (1) Audio/Visual equipment cabinet (AV-1) By Others. Located outside of room.
 - 2) One (2) television monitors (by others)
 - 3) One (2) HDMI port and (1) USB-C for laptop and computer interface (MPWP-1).
 - 4) One (2) A/V Control Touch Panel (MPC-1)
 - 5) Ceiling mounted audio speakers
 - 6) Wireless ayout and quantity to be determined by A/V Contractor).
 - 7) One (1) scaler located in equipment rack (AV-2).
 - b. System Operation:
 - 1) Basic Operation: The system will be centrally controlled via the media presentation controller MPC-1. Video content can be shown on the television monitors. Audio content will be heard through the ceiling mounted speakers. Content will be provided by any of the following sources:

- a) A presenter's laptop computer via any of the HDMI or VGA interfaces (MPWP-1).
- b) Microphones
- 2) The system shall be designed so that the end user can easily configure the system for any combination of input and output.
- c. Audio System - Provide and install an Audio Amplifier within AV-1. This audio amplifier will drive the speakers in the area. Signal source for the amplifier will be the A/V Matrix Switch. Audio sources will include but will not be limited to: Audio from presenter laptops/computers and table top microphones in the audio conference equipment. Provide and install ceiling mounted audio speakers. A preliminary layout is shown on the plans; the A/V Contractor will design the audio system and provide a final layout with specific speaker locations and quantities to support. The microphones and audio sources will be routed to an Audio Conferencing Codec that will allow echo cancellation, feedback elimination and system equalization. The Codec will be capable of using a digital phone system or VoIP system input for audio conferencing.

PART 2 - PRODUCTS

- A. Equipment Selection: Equipment covered by these Specifications is identified by manufacturer and model number. The performance data and part number provided herein are for the purpose of establishing equality of performance and function of equipment and are not intended to be restrictive. However, equipment bid as an alternate or equal shall have laboratory-measured data equal to that of the specified equipment in terms of quality, performance and function. The Owner shall determine the acceptability of proposed substitutions.
- B. Equipment Lists: The following sections describe the functions and requirements applicable to each of the designated Systems. These are submitted to express the purpose, operation, and satisfactory performance of the system. The components, material and workmanship required to achieve these functions, while not explicitly stated in this Section, are, nonetheless, implied and shall be furnished and installed by the Contractor. Where more than one (1) man/model number is listed, the features and functions of the first listed is representative of the component requirements. Equipment quantities shall be determined by the Contractor from the drawings and jobsite conditions.
 1. AV-1 (Audio/Visual Equipment Cabinet)
 - a. Provided by Others
 2. MPC-1 (Media Presentation Controller)
 - a. Room control will be through a wall mounted touch panel. The touch panel will have Ethernet connectivity to allow remote monitoring and control of the room functions. Control buttons will turn the projector on/off; control the projector screen, and control audio conference functions including volume. Ethernet connectivity will allow event scheduling to allow projectors and screen to be turned off at certain times to save lamp life, or have the room ready for meetings prior to arrival. It will also allow remote technical support such as device status, power state, and remote room setup.
 - b. Atolona AT-VTP-800-BL 8" touch panel (Basis of Design)
 - c. Or Approved equal

3. MPWP-1 (Media Presentation Wall Plate):
 - a. Decora style faceplates for media interface. These face plates will provide the interface to the ceiling mounted projectors and video monitors via the AV Matrix Switch. The electrical contractor will provide suitable pathways from the floor box to the projectors or televisions. This interface will consist of one (1) HDMI connector and one (1) display port adaptor. The AV Contractor will be responsible for providing and installing HDMI ports with display port adaptors and VGA ports.
 - b. HDMI and USB-C: Atlona AT-HDVS-210-U-TX-WP
 - c. HDMI Cables (no plan mark)
 - 1) Less than 9 feet – Extron 26-663-06
 - 2) 9 feet or more – Extron 26-663-09

4. (No Plan Mark – installed in AV-1 Mixer/Power Amplifier)
 - a. Crown – 2 Channel 70V Audio Amplifier – CTS-2000

5. “S” - Ceiling Loudspeaker – 6”
 - a. Tannoy CVS 6 (Basis of Design)
 - b. JBL Control
 - c. TOA

6. (No plan mark – stored in lectern) Wireless Lavalier Microphone System – UHF System
 - a. Shure QLXD 124/85(Basis of Design)
 - b. Lavalier devices Shure WL185
 - c. Or approved equal

7. (No plan mark) AV Digital Media Matrix Switch / Control Software
 - a. (Installed in AV-1) Atlona SW510W
 - b. Control Software: Atlona Velocity VGW-250 Gateway

8. (No Plan Mark – installed adjacent to each TV-1 television monitor) Digital Media Transmitter
 - a. Atlona HDVS-210U-TX-WP x 2
 - b. Or approved equal

9. (No plan mark) Receiver/Controller
 - a. Atlona HDVS-210U-TX-WP x 2 (Wall Plate Inputs)
 - b. Or approved equal

- C. Cables and Connectors – West Penn or equal by Belden or Liberty
 1. Digital Media High Bandwidth Cable DM-CBL-P-SP500 (Plenum)
 2. Digital Media Connectors DM-CONN-20
 3. Microphone cable – West Penn 25292 (Plenum)

4. Low Voltage control cable – West Penn 253114 (Plenum)
5. Loudspeaker cable – West Penn 25225 (Plenum)
6. Low Voltage power cable – West Penn 25224 (Plenum)
7. Remote Control cable (RS232) – West Penn D252406 (Plenum)
8. Line level Audio cable – West Penn 25293 (Plenum)
9. Audio Connectors – RCA and XLR type
10. Video Connectors – BNC and F type
11. Data/Telephone Connectors – RJ11, RJ12, RJ45 type

PART 3 - EXECUTION

3.1 EQUIPMENT SELECTION

- A. All equipment components supplied shall be current models, not obsolete or discontinued models. All equipment components, except as herein called for, shall be new, not used, nor re-manufactured except for equipment provided by Owner.
- B. If alternate manufacturers are proposed, provide itemized list of proposed substitutions, including cut sheets, specifications, and other material necessary for approval as an equal product. There are no alternates on Crestron Digital Media System.
- C. A/V integrator shall coordinate with the owner the logo on the touch screen device and menus on the touch panels. After all work is completed and system is commissioned with the owner, AV integrator shall hand over all owner manuals, wiring diagrams, cut sheets of equipment and the passwords needed to the owner to make future changes to the system.

3.2 WORKMANSHIP

- A. All equipment and associated hardware shall be fabricated and installed in accordance with the manufacturer's specific recommendations and in a manner that is consistent with practices and standards generally accepted by the professional audio and video industry. All wiring, connections and necessary termination identifications shall be accomplished expertly within the rack cabinet. Tag all cables and terminal strips.
- B. Location of grounding points shall be determined carefully to ensure minimization of system hum and elimination of ground loops. In addition, all connections of shields and conductors to equipment shall be in accordance with manufacturer's instructions.

3.3 PROOF OF PERFORMANCE REQUIREMENTS

- A. This section is to be performed by the A/V system Contractor.

- B. The satisfactory performance of the A/V systems shall be determined by specific tests and adjustments after substantial completion of the installation has been accomplished. The systems shall meet the following requirements, based upon available data and manufacturer's published Specifications.
1. Better than 60 dB S/N ratio as measured at the power amplifier output, and audio recording output.
 2. Less than 1.0% harmonic distortion in the 100 – 15,000 Hz frequency range as measured at maximum power amplifier output.
 3. Uniformity of coverage throughout the audience seating area shall be +/- 2 dBA using pink noise as the sound source.
 4. Check all circuits for continuity and proper phasing.
 5. The data/video projector shall be verified for compliance with manufacturer's specification in terms of light output in lumens, adjustment to specified image size, projection geometry, adjustments, proper picture adjustments, proper focus, etc.
 6. All audio and video sources shall be verified for proper operations and that all field adjustments to this equipment have been performed.
 7. Provide technical support during system tuning and adjustment phases.

3.4 PROGRAMMING

- A. The audio visual integrator shall provide all programming passwords to the owner at the time when owner manuals are turned over to the Owner. The Owner shall be able in the future make any changes to the system at their discretion and not be forced to use a specific installer based on the system architecture. Provide Code "Compiled/Uncompiled" to the Owner for future changes.

3.5 TRAINING

- A. Contractor shall provide and coordinate detailed training on each different rooms A/V system. Provide hands-on training and cheat sheet of how to use the system.

END OF SECTION 274100

HIAWATHA PUBLIC LIBRARY RENOVATION AND EXPANSION

CONSTRUCTION DOCUMENTS - 03/15/2019

ARCHITECT OF RECORD:
FUSION
 ARCHITECTS, INC.
 1950 BOYSSON RD.
 HIAWATHA, IOWA 52233
 319.383.9011
 877.393.9022
 www.Fusion-Architects.com

CONSULTANTS:
CIVIL ENGINEER
 HALL & HALL ENGINEERS, INC.
 1860 BOYSSON RD.
 HIAWATHA, IA 52233
 319.362.9548

STRUCTURAL / MEP ENGINEER
 BLUESTONE ENGINEERING
 9119 NORTH PARK DR.
 JOHNSTON, IA 50131
 515-727-0700

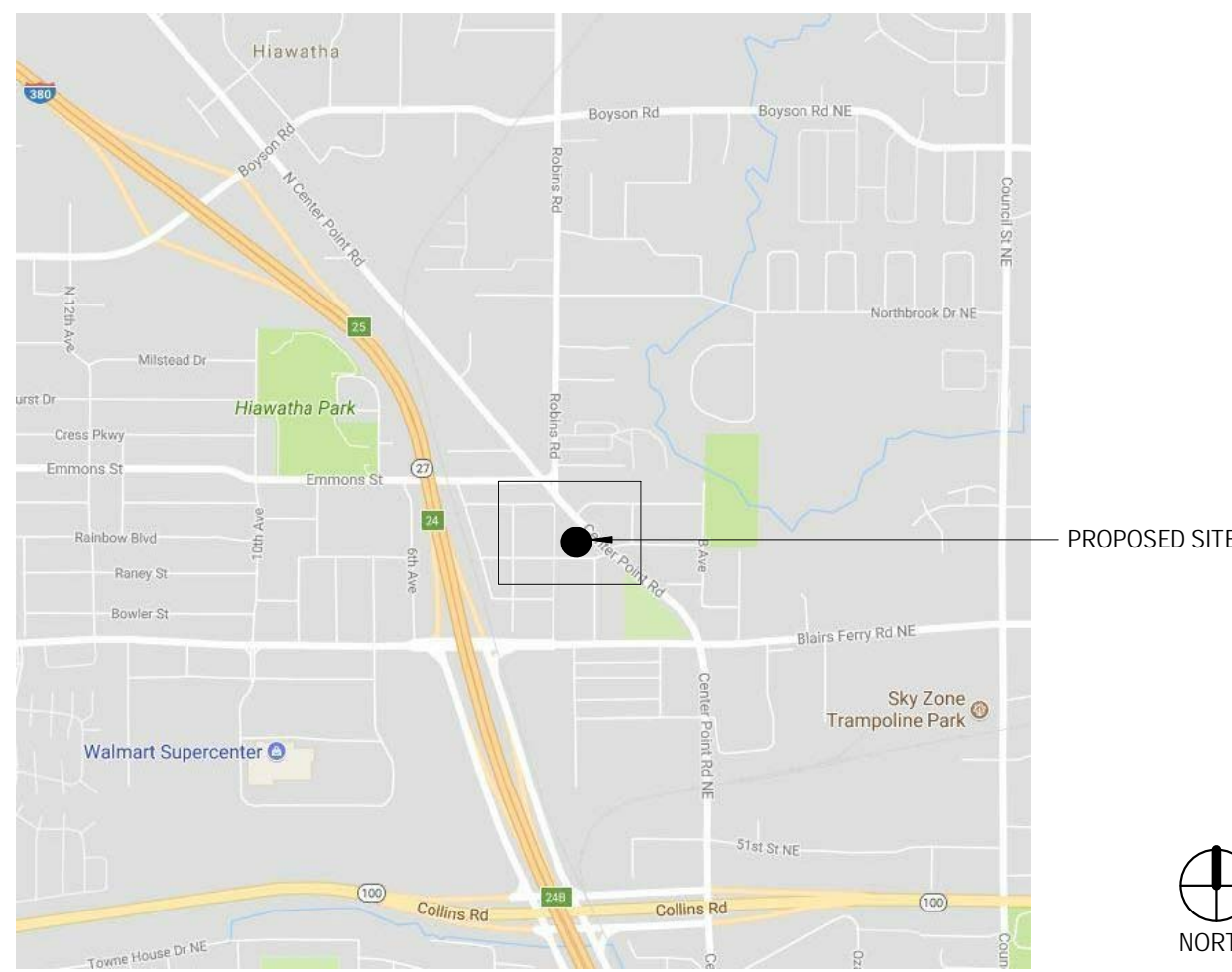


PRINTED

DATE	REMARKS
03/15/2019	CONSTRUCTION DOCUMENTS

Rev#	Description	Date

REGIONAL MAP



VICINITY MAP



BUILDING PERSPECTIVE



ABBREVIATIONS

ACT	ACOUSTIC CEILING TILE	EQUIP	EQUIPMENT	OPP	OPPOSITE
ADA	AMERICANS WITH DISABILITIES ACT	EXT	EXTERIOR	ORD	OVERFLOW ROOF DRAIN
ADJ	ADJUSTABLE	EXP	EXPANSION EXPOSED	PLAM	PLASTIC LAMINATE
AFB	ABOVE FINISHED FLOOR	FD	FLOOR DRAIN	PLYWD	PLYWOOD
AHU	AIR HANDLING UNIT	FE	FIRE EXTINGUISHER	PRF	PAIR
ALT	ALTERNATE	FEC	FIRE EXTINGUISHER CABINET	PREFIN	PREFINISHED
ALUM	ALUMINUM	FIN	FINISH	PTD	PAPER TOWEL DISPENSER
ANOD	ANODIZED	FXM	FIXTURE	PT	PAINT
ANSI	AMERICAN NATIONAL STANDARD INSTITUTE	FHC	FIRE HOSE CABINET	PTD	PAPER TOWEL DISPENSER
APPROX	APPROXIMATE	RF	RUBBER BASE	RCP	REFLECTED CEILING PLAN
ARCH	ARCHITECTURAL	FLR	FLOOR	RD	ROOF DRAIN
ASTM	ASTM INTERNATIONAL	FR	FACE OF FINISH	REF	REFRIGERATOR
ASTM	ARCHITECTURAL WOODWORK	FRP	FIBERGLASS REINFORCED PLASTIC	REIN	REINFORCE
BD	BOARD	FGL	FIBERGLASS	REIN	REINFORCE
BLDG	BLOCKING	FT	FOOT OR FEET	REIN	REINFORCE
BGC	BY GENERAL CONTRACTOR	G	GROUND	REIN	REINFORCE
BO	BY OTHER (THAN CONTRACTOR)	GA	GAUGE	REIN	REINFORCE
BRG	BEARING	GALV	GALVANIZED	RF	RESILIENT FLOORING
CAB	CABINET	GRAB	GRAB BAR	RO	ROUGH OPENING
CB	CERAMIC BASE	GC	GENERAL CONTRACTOR	RTU	ROOF TOP UNIT
CJP	CAST-IN-PLACE	GFCI	GROUND FAULT CIRCUIT INTERRUPTER	RV	ROOF VENT
CG	CORNER GUARD	GL	GLASS	SIM	SIMILAR
CJ	CONTROL JOINT	GYP	GYPSONUM	SLMT	SLANT
CL	CLEAR	GYP BD	GYPSONUM BOARD	SCHED	SCHEDULE
CMU	CONCRETE MASONRY UNIT	HW	HARDWARE	SPEC	SPECIFICATION
CLR	CLEAR	HM	HOLLOW METAL	SO	SQUARE
CMJ	CONCRETE MASONRY UNIT	HORIZ	HORIZONTAL	SST	STAINLESS STEEL
CONR	COUNTER	HT	HEIGHT	STRUC	STRUCTURAL
CONC	CONCRETE	HVAC	HEATING, VENTILATION, & AIR CONDITIONING	SURF	SURFACE
CONST	CONSTRUCTION	IBC	INTERNATIONAL BUILDING CODE	SUSP	SUSPENDED
CONT	CONTINUOUS	ID	INSIDE DIAMETER	SYMM	SYMMETRICAL
CORR	CORRIDOR	INSUL	INSULATION	T	TEMPERED
CPT	CARPET	IN	INCH	T&G	TONGUE AND GROOVE
CS	CONCRETE SEALED	INT	INTERIOR	THRU	THROUGH
CSWK	CASEWORK	JAN	JANITOR	T&B	TACKBOARD
CT	CERAMIC TILE	JOINT	JOINT	TOB	TOP OF BEAM
CTB	CERAMIC TILE BASE	KS	KNEE SPACE	TOC	TOP OF CONCRETE
CTR	CENTER, CENTERED	LAV	LAVATORY	TOF	TOP OF FOOTING
CW	CURTAIN WALL	LKR	LOCKER	TOS	TOP OF STEEL
D	DEPTH	LVR	LOUVER	TPD	TOILET PAPER DISPENSER
DBL	DOUBLE	MFR	MANUFACTURER	TSTAT	THERMOSTAT
DEAD	DEMOLITION	MAX	MAXIMUM	TV	TELEVISION
DEPT	DEPARTMENT	MECH	MECHANICAL	TYP	TYPICAL
DET	DETAIL	MEZZ	MEZZANINE	UL	UNDERWRITERS LABORATORIES
DIA	DIAMETER	MILWK	MILLWORK	UNF	UNFINISHED
DIAG	DIAGONAL	MM	MILLIMETER	UNO	UNLESS NOTED OTHERWISE
DN	DIMENSION	MO	MASONRY OPENING	VCT	VINYL COMPOSITE TILE
DSP	DISPENSER	MTL	METAL	VERT	VERTICAL
DN	DOWN	MISC	MISCELLANEOUS	VEST	VESTIBULE
DW	DISHWASHER	MTD	MOUNTED	VIF	VERIFY IN FIELD
DWG	DRAWING	N	NEW	VTR	VENT THROUGH ROOF
EACH	EACH	NA	NOT APPLICABLE	VWC	VINYL WALL COVERING
EFS	EXTERIOR INSULATION & FINISH SYSTEM	NFA	NATIONAL FIRE PROTECTION ASSOCIATION	W	WITH
EJ	EXPANSION JOINT	NIC	NOT IN CONTRACT	W/O	WITHOUT
ELECT	ELECTRICAL	NOM	NORMAL	W/B	WOOD BLOCKING
EL	ELEVATION	NTS	NOT TO SCALE	WC	WATER CLOSET
ELEV	ELEVATION	OC	ON CENTER	WD	WOOD
EMER	EMERGENCY	OF	OUTSIDE DIAMETER	WR	WATER RESISTANT
ENCL	ENCLOSURE	OFICI	OWNER FURNISHED, CONTRACTOR INSTALLED	WSCT	WAINSCOT
EQ	EQUAL	OH	OWNER FURNISHED, OWNER INSTALLED	WT	WEIGHT
		OPNG	OPENING	WWF	WELDED WIRE FABRIC
				WWM	WELDED WIRE MESH

MATERIAL LEGEND

	EARTH
	COMPACT GRANULAR FILL
	BRICK
	MASONRY
	CONCRETE
	STEEL
	ALUMINUM
	DIMENSIONAL LUMBER
	FINISHED LUMBER
	PLYWOOD SHEATHING
	GYPSONUM BOARD
	RIGID INSULATION
	BATT INSULATION
	EIFS

GENERAL PROJECT NOTES

- DO NOT SCALE THE DRAWINGS.
- ALL WORK SHALL COMPLY WITH ALL APPLICABLE BUILDING CODES, ORDINANCES, AND REGULATIONS AS ADOPTED BY LOCAL AUTHORITIES HAVING JURISDICTIONS AND IN FORCE AT TIME OF CONSTRUCTION. CONSTRUCTION NOTES APPLY TO ALL TRADES. THESE NOTES ARE PROVIDED FOR GENERAL PROJECT INFORMATION AND ARE TO BE APPLIED TO ALL AREAS OF THE PROJECT WHERE WORK IS BEING COMPLETED. THE GENERAL CONTRACTOR SHALL VERIFY ALL DIMENSIONS AND JOB CONDITIONS PRIOR TO BIDDING THE WORK AND SHALL REPORT TO THE ARCHITECT IMMEDIATELY ANY DISCREPANCIES OR OMISSIONS WHICH WOULD INTERFERE WITH SATISFACTORY COMPLETION OF WORK.
- THE GENERAL CONTRACTOR IS TO VERIFY FIELD CONDITIONS PRIOR TO COMMENCEMENT OF EACH PORTION OF WORK.
- ALL CONSTRUCTION DRAWINGS AND SPECIFICATIONS ARE COMPLIMENTARY, AND WHAT IS CALLED FOR BY EITHER WILL BE BINDING AS IF CALLED FOR BY ALL. ANY WORK SHOWN OR REFERRED TO ON ANY SET OF DRAWINGS SHALL BE PROVIDED AS THOUGH SHOWN ON ALL RELATED DRAWINGS. REFER TO STRUCTURAL, MECHANICAL, ELECTRICAL, AND PLUMBING DRAWINGS FOR ADDITIONAL NOTES AND SYMBOLS.
- THE GENERAL CONTRACTOR SHALL NOTIFY THE ARCHITECT IN WRITING OF ANY DISCREPANCIES BETWEEN THE DRAWINGS, THESE NOTES, ANY SPECIFICATIONS, AND FIELD CONDITIONS BEFORE COMMENCING ANY WORK AND REQUEST CLARIFICATION.
- THE GENERAL CONTRACTOR IS RESPONSIBLE FOR THE COORDINATION OF ALL WORK BY ALL TRADES, INCLUDING THOSE PROVIDED AND DIRECTED BY THE OWNER.
- ALL WORK NOTED BY OTHER OR "I.C." IS TO BE ACCOMPLISHED BY A CONTRACTOR OTHER THAN THE GENERAL CONTRACTOR AND IS NOT TO BE PART OF THE CONSTRUCTION AGREEMENT. THE GENERAL CONTRACTOR IS TO COORDINATE WITH THE "OTHER" CONTRACTOR AS REQUIRED.
- ALL CONSTRUCTION ACTIVITIES SHALL BE COORDINATED WITH THE OWNER TO MINIMIZE DISRUPTION OF THE NORMAL DAILY FUNCTIONS OF THE OWNER'S OCCUPIED AREAS (IF APPLICABLE).
- CONTRACTOR SHALL CONSULT PLANS OF ALL TRADES FOR OPENINGS AND ROUGH-INS THROUGH SLABS, WALLS, CEILING, AND ROOF FOR DUCTS, PIPES, CONDUITS, CABINETS AND EQUIPMENT, AND SHALL VERIFY SIZE AND LOCATION BEFORE PROCEEDING WITH WORK.
- CONTRACTOR SHALL COORDINATE WITH ALL OWNER FURNISHED ITEMS AND PROVIDE ALL REQUIRED MECHANICAL AND ELECTRICAL CONNECTIONS, INCLUDING STUB OUTS FOR NEW OR FUTURE WORK INDICATED.
- THE GENERAL CONTRACTOR IS RESPONSIBLE FOR INSURING THE SUBCONTRACTORS ARE BIDDING AND CONSTRUCTING FROM A COMPLETE SET OF THE MOST CURRENT SET OF DRAWINGS.
- THE GENERAL CONTRACTOR SHALL MAINTAIN A CURRENT AND COMPLETE SET OF CONSTRUCTION DRAWINGS ON SITE DURING ALL PHASES OF CONSTRUCTION FOR USE BY ALL TRADES.
- ALL STRUCTURAL, MECHANICAL, ELECTRICAL, AND PLUMBING DRAWINGS ARE SUPPLEMENTARY TO THE ARCHITECTURAL DRAWINGS. FIXTURES AND FITTINGS, ELECTRICAL AND COMMUNICATION OUTLETS ETC., WHEN SHOWN ON THE ARCHITECTURAL DRAWINGS, ARE FOR LOCATION PURPOSES ONLY. IT SHALL BE THE RESPONSIBILITY OF EACH CONTRACTOR TO COORDINATE WITH THE ARCHITECTURAL DRAWINGS BEFORE INSTALLATION OF THEIR WORK. ANY DISCREPANCIES BETWEEN THE ARCHITECTURAL AND CONSULTING ENGINEERS DRAWINGS SHALL BE BROUGHT TO THE ATTENTION OF THE ARCHITECT BY WRITTEN NOTIFICATION FOR CLARIFICATION. ANY WORK INSTALLED INCORRECT WITH THE ARCHITECT'S DRAWINGS SHALL BE CORRECTED AT THE CONTRACTOR'S EXPENSE AND AT NO EXPENSE TO THE OWNER.
- THE CONTRACTOR SHALL PROVIDE AND INSTALL COMPLETE SYSTEMS. ALL TRADES SHALL INSTALL SYSTEMS AND PRODUCTS IN CONFORMANCE WITH MANUFACTURER'S RECOMMENDATIONS AND FOLLOW BEST PRACTICES SPELLED OUT BY VARIOUS TRADE ASSOCIATIONS, IE: IBA - BRICK INDUSTRY ASSOCIATION, NABA - NATIONAL AIR BARRIER ASSOCIATION, ETC.
- ROOM FINISH SCHEDULE SHALL NOT BE TAKEN AS A COMPLETE SPECIFICATION FOR ALL INTERIOR ROOM MATERIALS. HOWEVER, IT SHALL BE TAKEN TO THE EXTENT OF THE MATERIAL IT DOES SPECIFY. UNLESS OTHERWISE INDICATED, PLANS DIMENSIONS ARE TO THE COLUMN GRID LINES, NOMINAL FACE OF MASONRY, FACE OF STUDS, AND FACE OF CONCRETE WALLS.
- FLOOR LINE AND LEVEL INDICATORS REFER TO THE TOP OF CONCRETE SLAB AND THE TOP OF SUBFLOOR IN WOOD CONSTRUCTION, FINISH FLOORING AND GYPCRETE ARE TO BE INSTALLED ABOVE THE FLOOR LINE. FOR DEPRESSED FLOORS AND CURBS, SEE STRUCTURAL DRAWINGS.
- ALL GRADES SHOWN ON THE BUILDING ELEVATIONS AND SECTIONS ARE APPROXIMATE. REFER TO CIVIL DRAWINGS FOR FINAL GRADES.
- WHERE A DOOR IS LOCATED NEAR A CORNER OF A ROOM AND IS NOT LOCATED BY A DIMENSION, ON PLAN OR DETAILS, THE DIMENSION SHALL BE 3" FROM THE FACE OF THE STUD WALL TO FACE OF ROUGH OPENING. THE DIMENSION SHALL BE 6" FROM FACE OF WALL TO EDGE OF ROUGH OPENING AT CONCRETE WALLS AND 4" AT CMU WALLS.
- WALL, FLOOR, AND ROOF ASSEMBLIES WITH UL DESIGN NUMBERS SHALL BE CONSTRUCTED TO UL STANDARDS. PRODUCTS USED SHALL BEAR UL CLASSIFICATIONS WHERE REQUIRED BY THE UL DESIGN.
- ALL FIRE RATED WALLS SHALL BE PERMANENTLY IDENTIFIED PER INTERNATIONAL BUILDING CODE CHAPTER 7. SIGNS OR STENCILS SHALL BE MIN 6" IN HEIGHT WITH RED LETTERING EXCEPT R-2 OCCUPANCIES.
- ALL PENETRATIONS AND OPENINGS SHALL MEET OR EXCEED WALL ASSEMBLY FIRE RATINGS REQUIREMENTS OF THE GOVERNING FIRE AUTHORITIES.
- ALL LISTED METAL STUD DIMENSIONS, GAGE, AND THICKNESS ARE MINIMUMS AND ARE PROVIDED AS BASIS OF DESIGN. REFER TO STRUCTURAL DRAWINGS.
- ALL INTERIOR STUD WALLS SHALL BE CONSTRUCTED TO ACHIEVE MINIMUM S.T.C. RATINGS AS INDICATED ON THE DRAWINGS.
- INSTALL DEFLECTION TRACK AT ALL METAL STUD WALLS EXTENDING TO THE UNDERSIDE OF STRUCTURE WHERE DEFLECTION MAY OCCUR.
- THE GENERAL CONTRACTOR SHALL INSTALL ANY AND ALL BLOCKING AND NAILERS REQUIRED IN WALLS AND OTHER ASSEMBLIES FOR THE PROPER INSTALLATION AND SUPPORT OF ALL EQUIPMENT AND ACCESSORIES.
- PROVIDE ACOUSTIC SEALANT AT PERIMETER OF ALL ACOUSTIC WALLS.
- ACCESS MUST BE PROVIDED FOR ALL CONCEALED VALVES, DAMPER CONTROLS, FIRE DAMPER LINKAGE, ELECTRICAL JUNCTION BOXES, ETC. OBTAIN ARCHITECT'S APPROVAL IN LOCATING ALL ACCESS DOORS PRIOR TO INSTALLATION.
- PLUMBING, CONDENS, DUCTS, ETC., SHALL BE CONCEALED IN WALLS AT OCCUPIED SPACES UNLESS OTHERWISE DIRECTED. ALL EXPOSED LOCATIONS AND PATHS TO BE REVIEWED WITH DESIGN TEAM PRIOR TO INSTALLATION. EXPOSED DUCTS TO BE DOUBLE WALLED WITH EXTERIOR FINISH AS DIRECTED BY DESIGN TEAM.
- ALL FLASHING SHALL BE DONE IN STRICT ACCORDANCE WITH THE FLASHING MANUFACTURER'S PUBLISHED SPECIFICATIONS AND DETAILS. THIS INCLUDES THE AMOUNT OF OVERLAP AND INSTALLATION OF DRIP EDGES, ETC.

PROJECT TEAM

ARCHITECT OF RECORD:
 FUSION ARCHITECTS, INC.
 1950 BOYSSON RD.
 HIAWATHA, IA 52233
 TEL: 319-393-9011
 CONTACT: JACOB ALLEN
 EMAIL: JALLEN@FUSION-ARCHITECTS.COM

CIVIL ENGINEER / LANDSCAPE:
 HALL AND HALL ENGINEERS, INC.
 1860 BOYSSON RD.
 HIAWATHA, IA 52233
 TEL: 319-362-9548
 CONTACT: BRIAN VOGEL
 EMAIL: BRIAN@HALLENG.COM

STRUCTURAL ENGINEER:
 LONG ENGINEERING, LLC
 URBANDALE, IA
 TEL: 515-669-4339
 CONTACT: BEN LONG
 EMAIL: BEN@LONGENGINEERINGLLC.COM

MECHANICAL ENGINEER:
 BLUESTONE ENGINEERING
 9119 NORTH PARK DR.
 JOHNSTON, IA 50131
 TEL: 515-727-0700
 CONTACT: DENNIS FORINASH
 EMAIL: FORINASH@BLUESTONEMEP.COM

ELECTRICAL ENGINEER:
 BLUESTONE ENGINEERING
 9119 NORTH PARK DR.
 JOHNSTON, IA 50131
 TEL: 515-727-0700
 CONTACT: KEVIN BRUXVORTK
 EMAIL: BRUXVORTK@BLUESTONEMEP.COM

I hereby certify that the portion of this technical submission described below was prepared by me or under my supervision and responsible charge. I am a duly Licensed Engineer under the laws of the State of Iowa.

Kevin J. Bruvortk Date: 03/15/2019
 December 31, 2019 19927
 License renewal date: Registration No.
 EDS, ES, ED, E, and T Series Sheets
 Pages or sheets covered by this seal

I hereby certify that the portion of this technical submission described below was prepared by me or under my supervision and responsible charge. I am a duly Licensed Engineer under the laws of the State of Iowa.

Patrick D. Forinash Date: 03/15/2019
 December 31, 2020 16723
 License renewal date: Registration No.
 M, MD, PD, P and F Series Sheets
 Pages or sheets covered by this seal

I hereby certify that the portion of this technical submission described below was prepared by me or under my supervision and responsible charge. I am a duly Licensed Engineer under the laws of the State of Iowa.

Benjamin J. Long Date: 03/15/2019
 December 31, 2018 16525
 License renewal date: Registration No.
 S Series Sheets
 Pages or sheets covered by this seal

I hereby certify that the portion of this technical submission described below was prepared by me or under my supervision and responsible charge. I am a duly Licensed Engineer under the laws of the State of Iowa.

Brian D. Vogel Date: 03/15/2019
 December 31, 2019 18714
 License renewal date: Registration No.
 C and L Series Sheets
 Pages or sheets covered by this seal

I hereby certify that the portion of this technical submission described below was prepared by me or under my direct supervision and responsible charge. I am a duly licensed architect under the laws of the State of Iowa.

Wade Squyers Date: 03/15/2019
 June 30, 2019 November 07, 2011
 Registration expires Date issued
 C, D, AS and A Series
 Pages or sheets covered by this seal

INDEX OF DRAWINGS

SHEET INDEX	
SHEET NUMBER	SHEET NAME
0. GENERAL	
G000	TITLE SHEET
G100	CODE COMPLIANCE
G101	WALL TYPES & ASSEMBLIES
G102	ADA STANDARDS
1.0 CIVIL	
C100	COVER
C200	GENERAL NOTES & DETAILS
C300	PHASING PLAN
C400	EXISTING SITE CONDITIONS AND REMOVAL PLAN
C500	SITE GRADING, EROSION CONTROL & SWPPP
C600	SITE UTILITY PLAN
C700	SITE PAVING PLAN
L100	LANDSCAPE PLAN
1.1 DEMO	
D100	DEMOLITION PLANS
D101	DEMOLITION ELEVATIONS
1.2 SITE PLAN	
AS100	ARCHITECTURAL SITE PLAN
2. ARCHITECTURAL	
A100	LOWER LEVEL CONSTRUCTION PLAN
A101	MAIN LEVEL CONSTRUCTION PLAN
A102	GENERAL NOTES & DETAILS
A200	EXTERIOR ELEVATIONS
A300	BUILDING SECTIONS
A310	WALL SECTIONS
A311	WALL SECTIONS
A312	WALL SECTIONS
A313	WALL SECTIONS
A400	LOWER LEVEL REFLECTED CEILING PLAN
A401	MAIN LEVEL REFLECTED CEILING PLAN
A500	ENLARGED CONSTRUCTION PLANS
AS10	ELEVATOR PLAN AND SECTIONS
AS20	STAIR PLAN & SECTIONS
A600	LOWER LEVEL FINISH PLAN
A601	MAIN LEVEL FINISH PLAN
A610	FINISH SCHEDULE AND DETAILS
A700	INTERIOR ELEVATIONS
A701	INTERIOR ELEVATIONS
A702	INTERIOR ELEVATIONS
A703	INTERIOR ELEVATIONS
A800	OPENINGS SCHEDULE
A801	OPENING DETAILS
A900	CASEWORK PROFILES
A901	DETAILS
A902	DETAILS
A903	DETAILS
A904	DETAILS
A905	DETAILS
A906	DETAILS
3.0. STRUCTURAL	
S001	GENERAL NOTES
S100	FOUNDATION PLANS
S101	FLOOR FRAMING PLAN
S102	ROOF FRAMING PLAN
S500	FOUNDATION DETAILS
S501	FLOOR FRAMING DETAILS
S502	ROOF FRAMING DETAILS
4. MECHANICAL	
M000	MECHANICAL COVER SHEET
MD101	MECHANICAL DEMOLITION PLAN
ML100	MECHANICAL LOWER LEVEL PLAN
ML101	FIRST FLOOR HVAC PLAN
MD200	MECHANICAL ENLARGED PLANS
M300	MECHANICAL DETAILS
MA00	MECHANICAL DETAILS
MM01	CONTROLS DETAILS
ME000	MECHANICAL SCHEDULES
ME01	MECHANICAL SCHEDULES
ME01	MECHANICAL SCHEDULES
6. PLUMBING	
PD000	PLUMBING UNDERFLOOR DEMOLITION PLAN
PD101	PLUMBING DEMOLITION PLAN
P000	PLUMBING UNDERFLOOR PLAN
P100	PLUMBING LOWER LEVEL PLAN
P101	PLUMBING MAIN LEVEL PLAN
P300	PLUMBING DETAILS
P301	PLUMBING DETAILS
P500	PLUMBING MATERIAL LIST AND SCHEDULES
7. FIRE SUPPRESSION	
F100	FIRE PROTECTION LOWER AND MAIN LEVEL PLAN
F101	FIRE PROTECTION ATTIC PLAN
F300	FIRE PROTECTION DETAILS
F500	FIRE PROTECTION MATERIAL LIST AND SCHEDULES
8. ELECTRICAL	
EDS101	ELECTRICAL SITE PLAN DEMOLITION
ES101	ELECTRICAL SITE PLAN
ED101	ELECTRICAL DEMOLITION PLAN
E101	LIGHTING LOWER LEVEL PLAN
E102	LIGHTING MAIN LEVEL PLAN
E103	POWER LOWER LEVEL PLAN
E104	POWER MAIN LEVEL PLAN
E105	SYSTEMS LOWER LEVEL PLAN
E106	SYSTEMS MAIN LEVEL PLAN
E300	ELECTRICAL DETAILS
E500	ELECTRICAL PANEL SCHEDULES
E501	ELECTRICAL SCHEDULES
T100	TECHNOLOGY LOWER LEVEL PLAN
T101	TECHNOLOGY MAIN LEVEL PLAN
T200	TECHNOLOGY ENLARGED PLANS
T300	TECHNOLOGY DETAILS
T500	TECHNOLOGY SCHEDULES

ARCHITECTURAL SYMBOLS LEGEND

DIRECTION INDICATOR	1 NAME SCALE	1 DWG
WALL TYPE IDENTIFICATION	DOOR TYPE IDENTIFICATION	ROOM TAG
		ROOM NAME
		101
		WINDOW TYPE IDENTIFICATION
		KEYNOTE TYPE IDENTIFICATION

KEY PLAN

HIAWATHA PUBLIC LIBRARY
 RENOVATION AND EXPANSION
 150 W WILLIAM ST
 HIAWATHA, IOWA 52233

TITLE SHEET

03/15/2019	G000
17-13400	
DRAWN BY: MM	
APPROVED BY:	



PRINTED

DATE	REMARKS
03/15/2019	CONSTRUCTION DOCUMENTS

Revision Schedule

Rev#	Description	Date

KEY PLAN

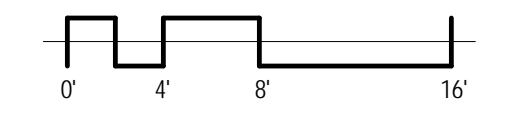


HIAWATHA PUBLIC LIBRARY
 RENOVATION AND EXPANSION
 150 W WILLIAM ST
 HIAWATHA, IOWA 52233

LOWER LEVEL CONSTRUCTION PLAN

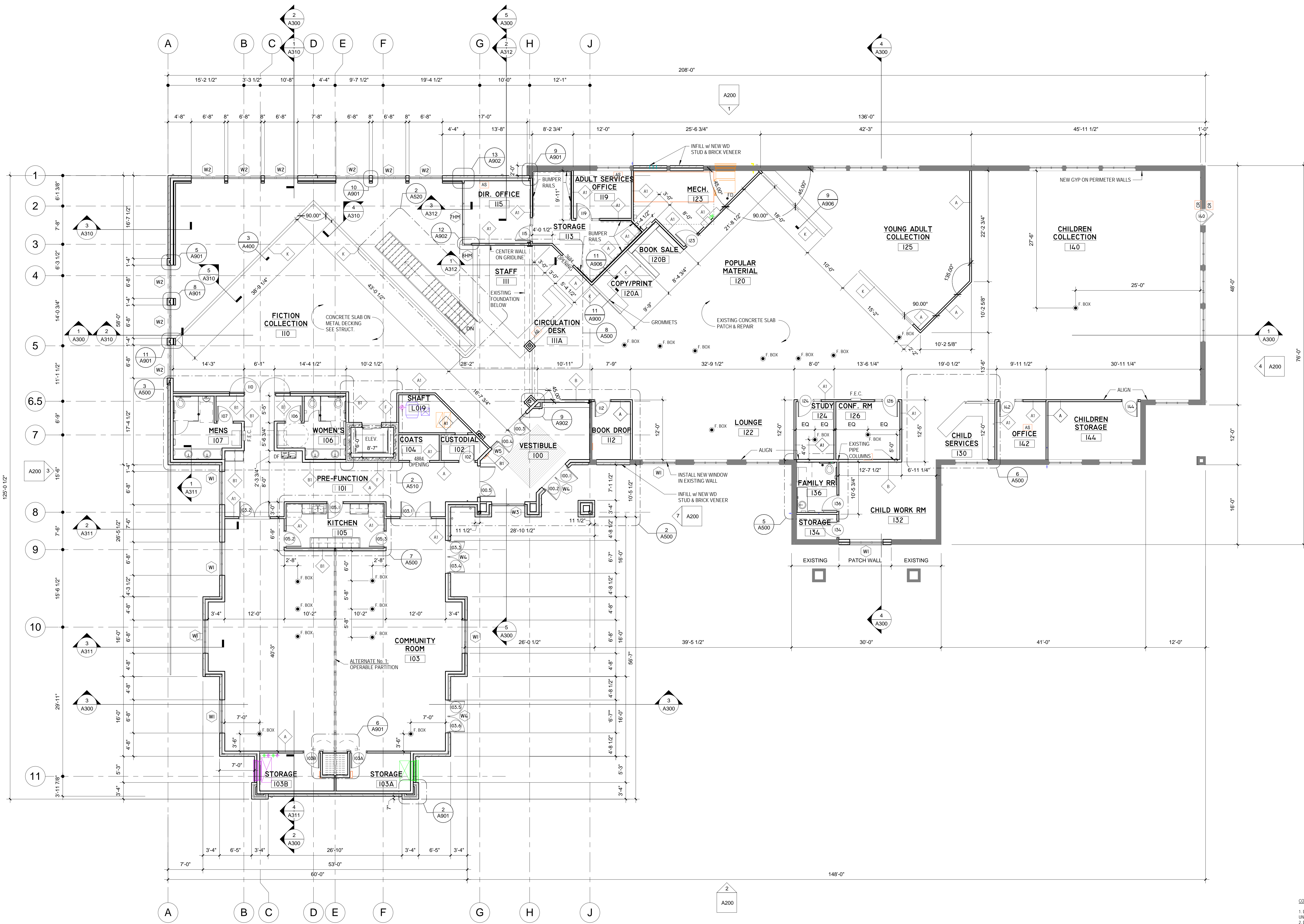
03/15/2019	A100
17-13400	
DRAWN BY: MM	
APPROVED BY:	

- CONSTRUCTION PLAN GENERAL NOTES
1. DIMENSIONS TO FACE OF STUD AT INTERIOR UNLESS OTHERWISE NOTED
 2. DIMENSIONS TO FACE OF BRICK AT EXTERIOR UNLESS OTHERWISE NOTED
 3. DOOR AND WINDOW OPENINGS ARE NOMINAL SIZES. G.C. TO COORDINATE R.O. & M.O. SIZES W/ WINDOW / DOOR MANUFACTURER.
 4. CONTRACTOR SHALL VERIFY IN FIELD ALL EXISTING CONDITIONS AND REPORT ANY DISCREPANCIES TO ARCHITECT PRIOR TO STARTING CONSTRUCTION.
 5. CONTRACTOR SHALL EXAMINE ALL DRAWINGS AND PROJECT MANUAL TO DETERMINE LOCATIONS AND TYPES OF BLOCKING AND BRACING REQUIRED.
 6. CONTRACTOR SHALL EXAMINE ALL DRAWINGS AND PROJECT MANUAL FOR ALL OWNER FURNISHED ITEMS TO BE INSTALLED BY CONTRACTOR.



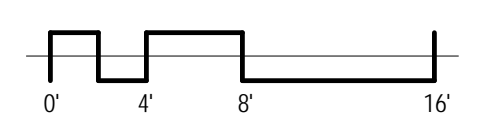
1 LOWER LEVEL CONSTRUCTION PLAN
 1/8" = 1'-0"

3/18/2019 3:40:11 PM V:\SP\2019\Renovation\Hiawatha Library 2017_18k\ZLLP.rvt



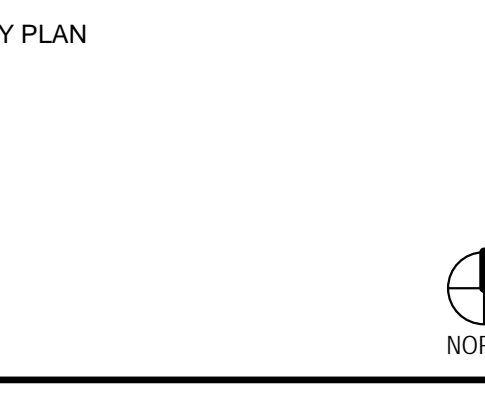
1 MAIN LEVEL CONSTRUCTION PLAN
1/8" = 1'-0"

- CONSTRUCTION PLAN GENERAL NOTES**
1. DIMENSIONS TO FACE OF STUD AT INTERIOR UNLESS OTHERWISE NOTED.
 2. DIMENSIONS TO FACE OF BRICK AT EXTERIOR UNLESS OTHERWISE NOTED.
 3. DOOR AND WINDOW OPENINGS ARE NOMINAL SIZES. G.C. TO COORDINATE R.O. & M.O. SIZES W/ WINDOW/DOOR MANUFACTURER.
 4. REFER TO SHEET G101 FOR INFORMATION ON ALL ASSEMBLIES.
 5. CONTRACTOR SHALL VERIFY IN FIELD ALL EXISTING CONDITIONS AND REPORT ANY DISCREPANCIES TO ARCHITECT PRIOR TO STARTING CONSTRUCTION.
 6. CONTRACTOR SHALL EXAMINE ALL DRAWINGS AND PROJECT MANUAL TO DETERMINE LOCATIONS AND TYPES OF BLOCKING AND BRACKING REQUIRED.
 7. CONTRACTOR SHALL EXAMINE ALL DRAWINGS AND PROJECT MANUAL FOR ALL OWNER FURNISHED ITEMS TO BE INSTALLED BY CONTRACTOR.



PRINTED	
DATE	REMARKS
03/15/2019	CONSTRUCTION DOCUMENTS

Revision Schedule		
Rev#	Description	Date



HIAWATHA PUBLIC LIBRARY
RENOVATION AND EXPANSION
150 W WILLIAM ST
HIAWATHA, IOWA 52233

MAIN LEVEL CONSTRUCTION PLAN

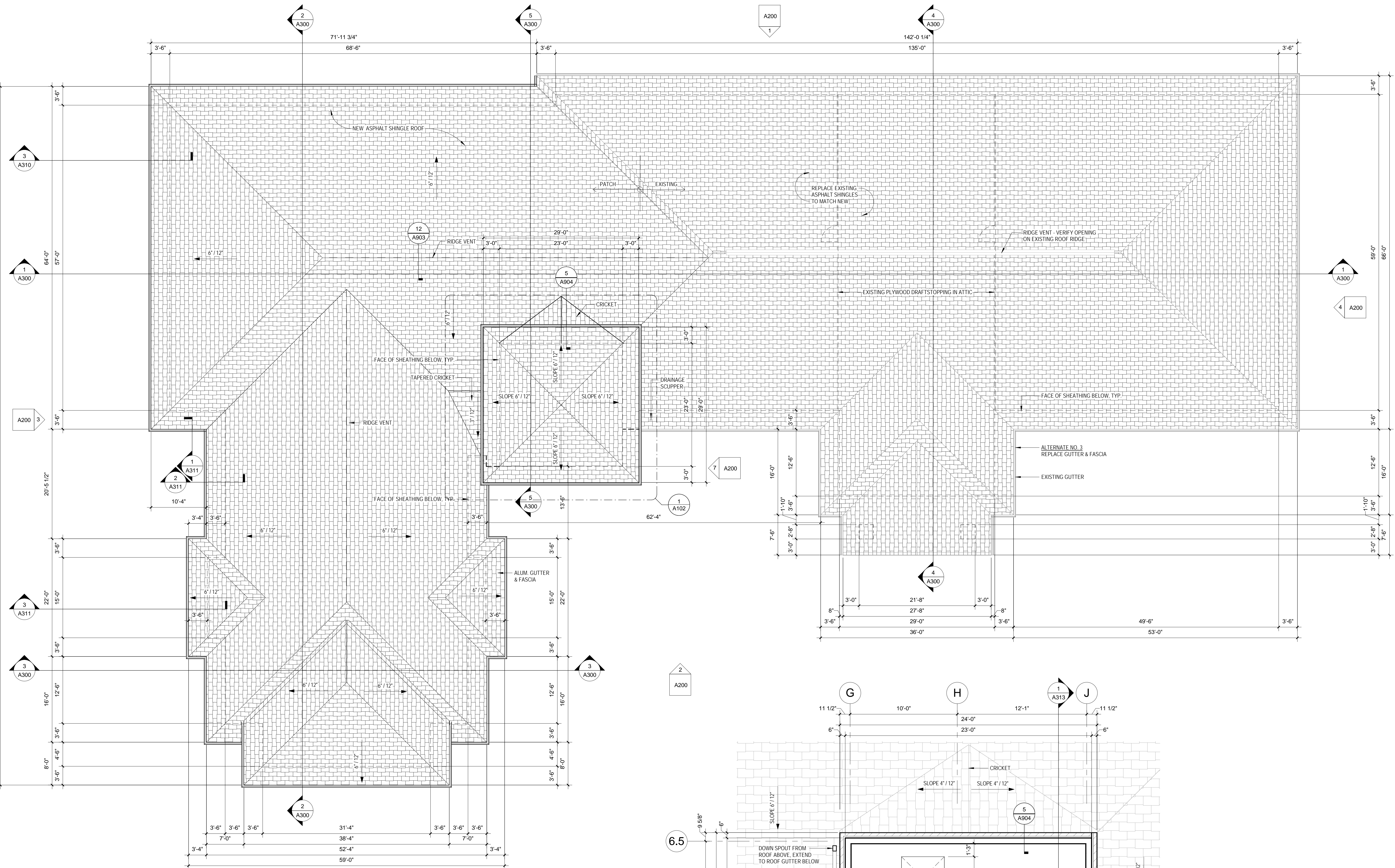


PRINTED

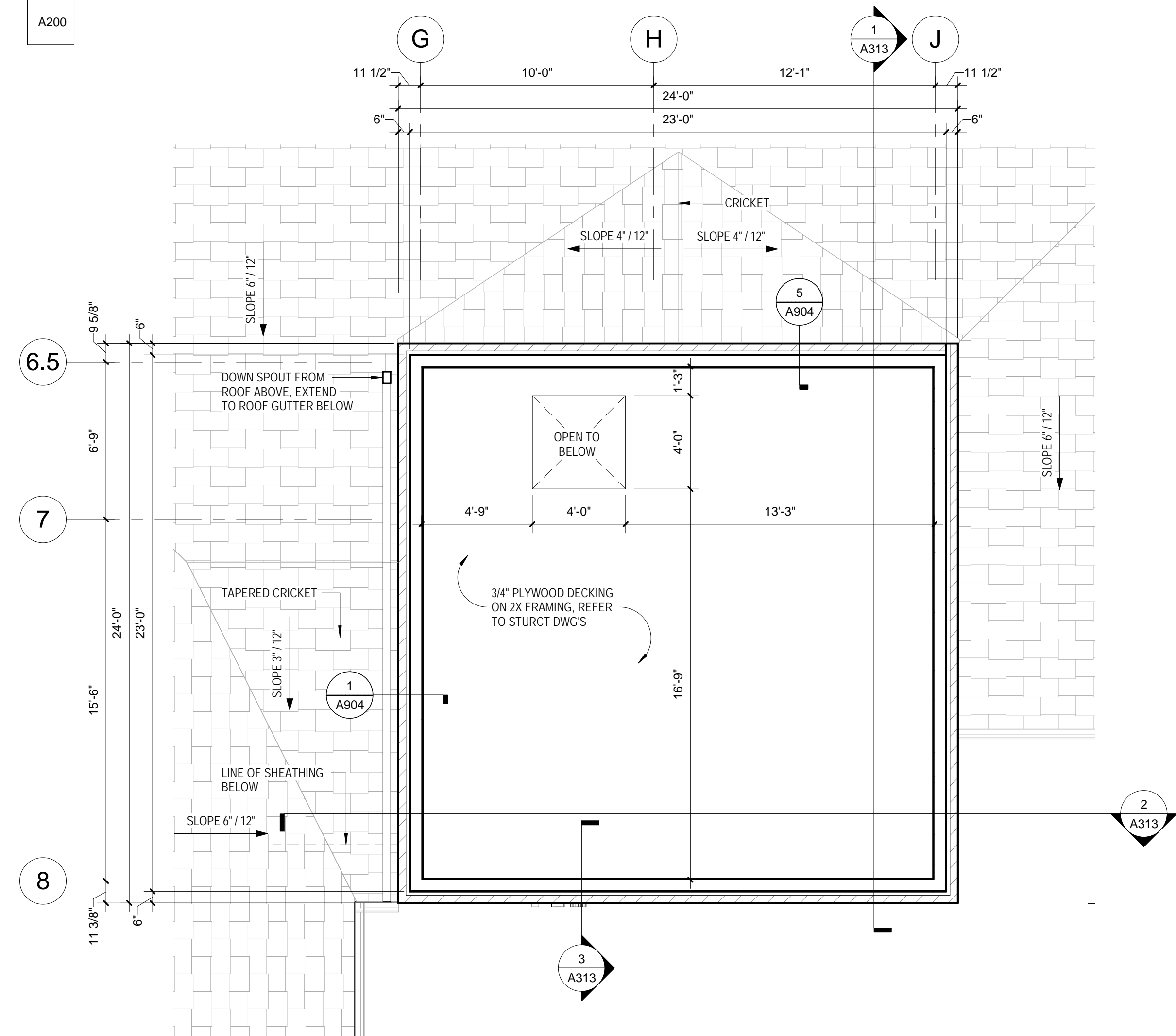
DATE	REMARKS
03/15/2019	CONSTRUCTION DOCUMENTS

Revision Schedule

Rev#	Description	Date

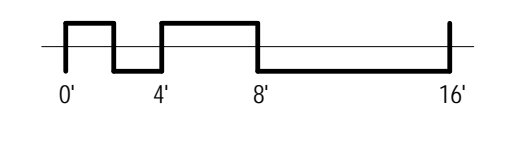


2 ROOF PLAN
 1/8" = 1'-0"

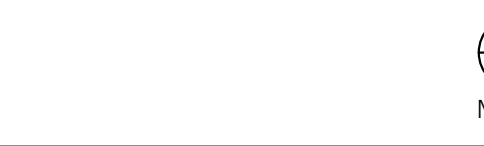


1 UPPER TOWER PLAN
 1/4" = 1'-0"

- CONSTRUCTION PLAN GENERAL NOTES
1. DIMENSIONS TO FACE OF STUD AT INTERIOR UNLESS OTHERWISE NOTED.
 2. DIMENSIONS TO FACE OF SHEATHING AT EXTERIOR UNLESS OTHERWISE NOTED.
 3. DOOR AND WINDOW OPENINGS ARE NOMINAL SIZES. C.F. TO COORDINATE R.O. & M.O. SIZES, W/ WINDOW / DOOR MANUFACTURER.
 4. CONTRACTOR SHALL VERIFY IN FIELD ALL EXISTING CONDITIONS AND REPORT ANY DISCREPANCIES TO ARCHITECT PRIOR TO STARTING CONSTRUCTION.
 5. CONTRACTOR SHALL EXAMINE ALL DRAWINGS AND PROJECT MANUAL TO DETERMINE LOCATIONS AND TYPES OF BLOCKING AND BRACING REQUIRED.
 6. CONTRACTOR SHALL EXAMINE ALL DRAWINGS AND PROJECT MANUAL FOR ALL OWNER FURNISHED ITEMS TO BE INSTALLED BY CONTRACTOR.



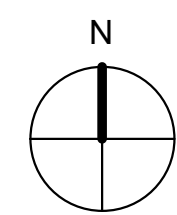
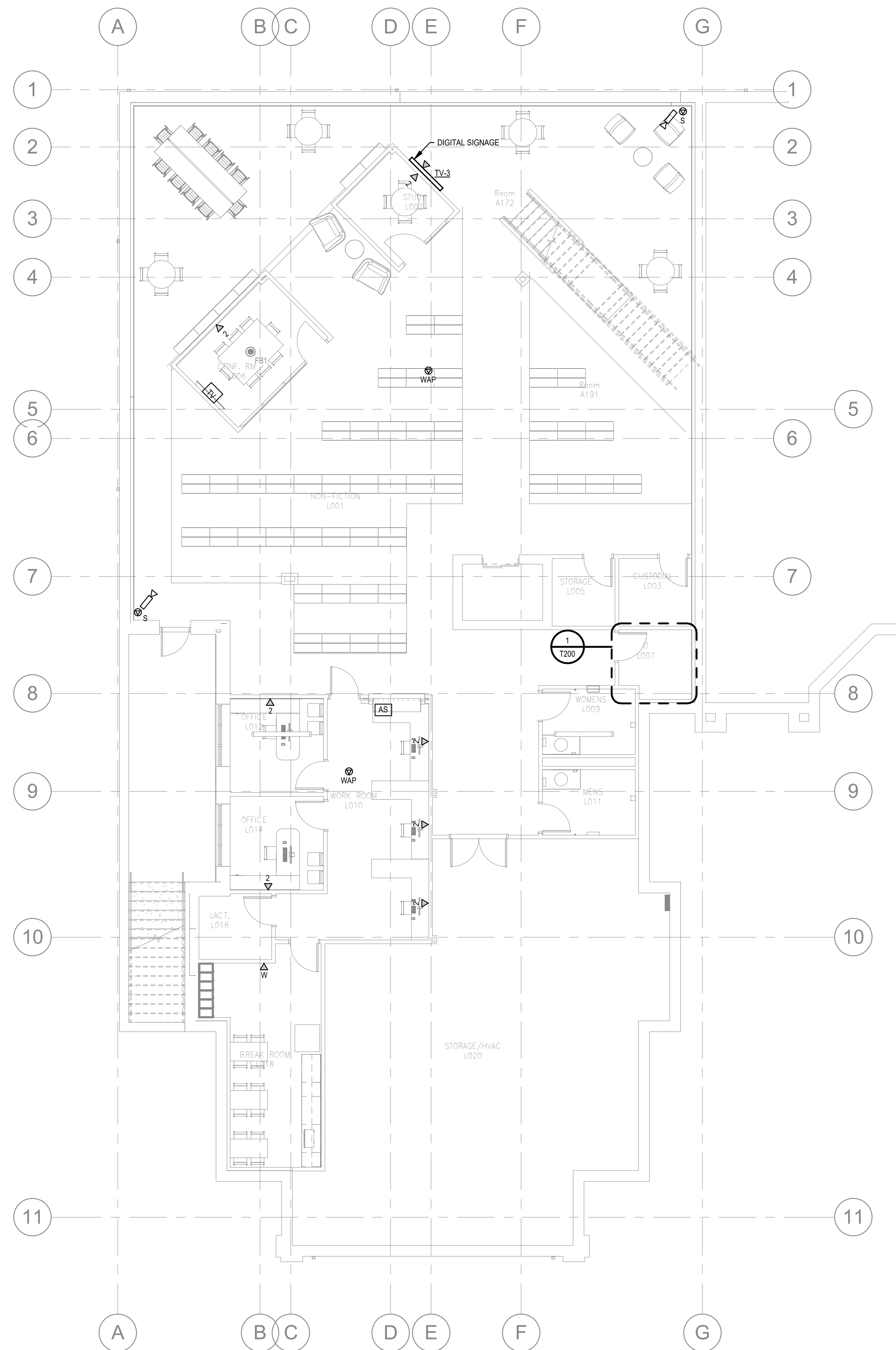
KEY PLAN



**HIAWATHA PUBLIC LIBRARY
 RENOVATION AND EXPANSION**
 150 W WILLIAM ST
 HIAWATHA, IOWA 52233

\\BSEC01\Filer\Release\Bachman\Documents\17-085 - MEP - 17_arch.mxd

3/18/2019 2:57:15 PM



1 TECHNOLOGY LOWER LEVEL PLAN
1/8" = 1'-0"

ARCHITECT OF RECORD:
FUSION
 ARCHITECTS, INC.
 1950 BOYSON RD.
 HIAWATHA, IOWA 52233
 319.393.9011
 877.393.9022
 www.Fusion-Architects.com

CONSULTANTS:
CIVIL ENGINEER
 HALL & HALL ENGINEERS, INC.
 1860 BOYSON RD.
 HIAWATHA, IA 52233
 319.362.9548
STRUCTURAL / MEP ENGINEER
 BLUESTONE ENGINEERING
 9119 NORTH PARK DR.
 JOHNSTON, IA 50131
 515-727-0700



PRINTED

DATE	REMARKS
01/22/2019	OWNER REVIEW SET
03/15/2019	CONSTRUCTION SET

Revision Schedule

Rev#	Description	Date

KEY PLAN

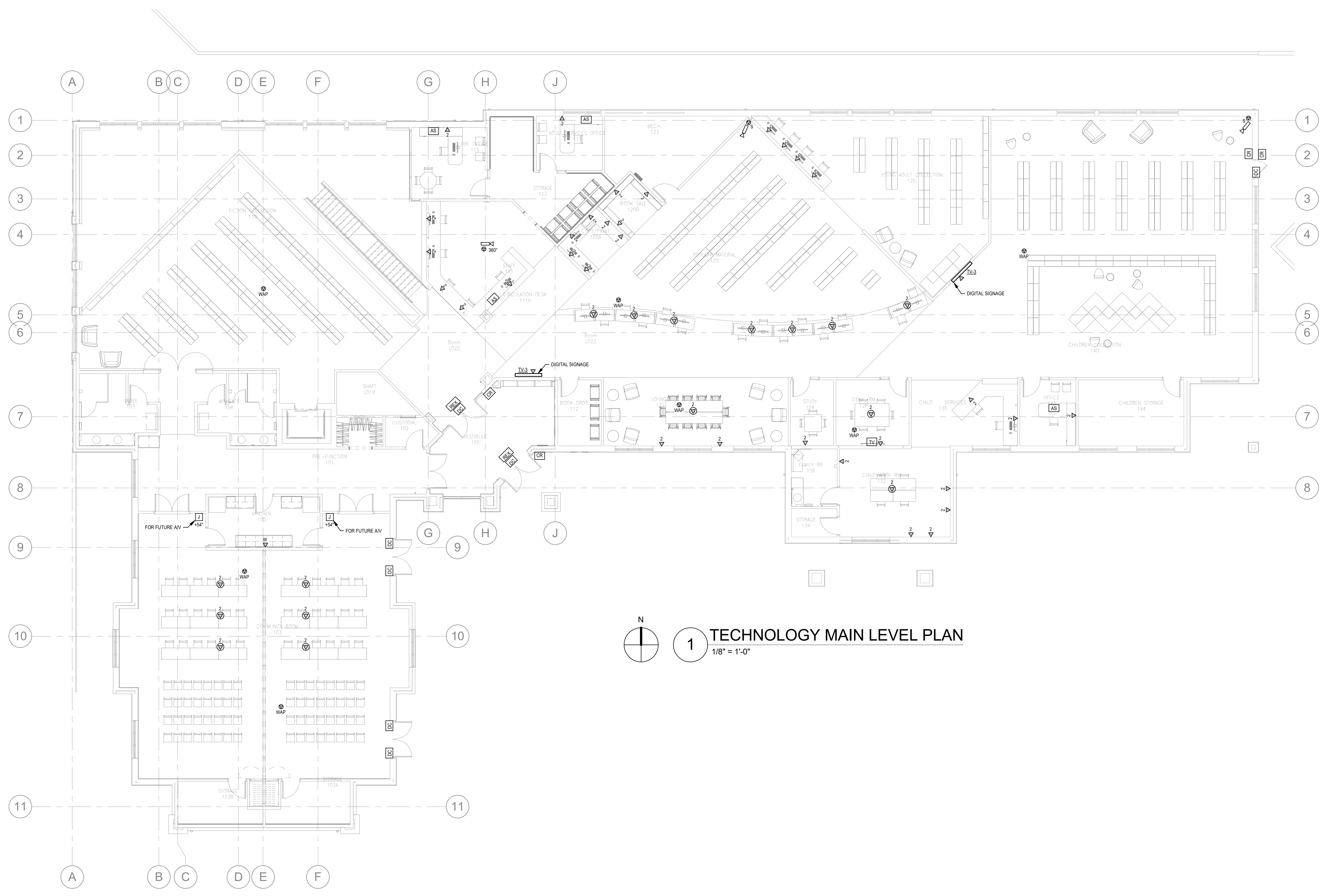
HIAWATHA PUBLIC LIBRARY
 RENOVATION AND EXPANSION
 150 W WILLIAM ST
 HIAWATHA, IOWA 52233
TECHNOLOGY LOWER LEVEL PLAN

9119 Northpark Drive
 Johnston, IA 50131
 515-727-0700
bluestone
 engineering

BLUESTONE MEP RESERVES PROPRIETARY RIGHTS, INCLUDING COPYRIGHTS, TO THIS DRAWING AND THE DATA SHOWN THEREON. SAID DRAWING AND DATA ARE THE EXCLUSIVE PROPERTY OF BLUESTONE MEP AND SHALL NOT BE USED OR REPRODUCED FOR ANY OTHER PROJECT WITHOUT THE EXPRESS WRITTEN APPROVAL AND PARTICIPATION OF BLUESTONE MEP. © 2019 BLUESTONE MEP

03/15/2019	T100
17-13400	
DRAWN BY: BSE	
APPROVED BY: BSE	

3/18/2019 12:57:19 PM \\BSEC001\Folder\BSEC001\Documents\117-085-MEP-17_Architect.mxd



1
TECHNOLOGY MAIN LEVEL PLAN
 1/8" = 1'-0"

ARCHITECT OF RECORD:
FUSION
 ARCHITECTS, INC.
 1950 BOYSSON RD.
 HIAWATHA, IOWA 52233
 319.383.9011
 877.393.9022
 www.Fusion-Architects.com

CONSULTANTS:
CIVIL ENGINEER
 HALL & HALL ENGINEERS, INC.
 1860 BOYSSON RD.
 HIAWATHA, IA 52233
 319.362.9548

STRUCTURAL / MEP ENGINEER
 BLUESTONE ENGINEERING
 9119 NORTH PARK DR.
 JOHNSTON, IA 50131
 515-727-0700



PRINTED

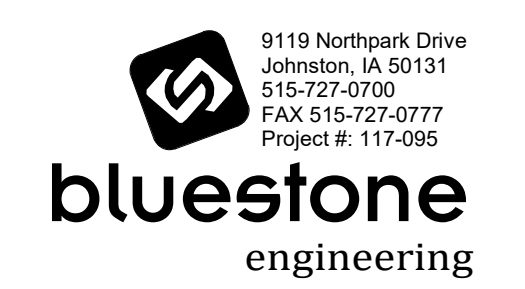
DATE	REMARKS
01/22/2019	OWNER REVIEW SET
03/15/2019	CONSTRUCTION SET

Revision Schedule

Rev#	Description	Date

KEY PLAN

HIAWATHA PUBLIC LIBRARY
RENOVATION AND EXPANSION
 150 W WILLIAM ST
 HIAWATHA, IOWA 52233
FIRST FLOOR TECHNOLOGY PLAN



BLUESTONE MEP RESERVES PROPRIETARY RIGHTS INCLUDING COPYRIGHTS TO THIS DRAWING AND THE DATA SHOWN THEREON. SHEET DRAWING AND DATA ARE THE EXCLUSIVE PROPERTY OF BLUESTONE MEP AND SHALL NOT BE USED OR REPRODUCED FOR ANY OTHER PROJECT WITHOUT THE EXPRESS WRITTEN APPROVAL AND PARTICIPATION OF BLUESTONE MEP. © 2019 BLUESTONE MEP

03/15/2019	T101
17-13400	
DRAWN BY: BSE	
APPROVED BY:	

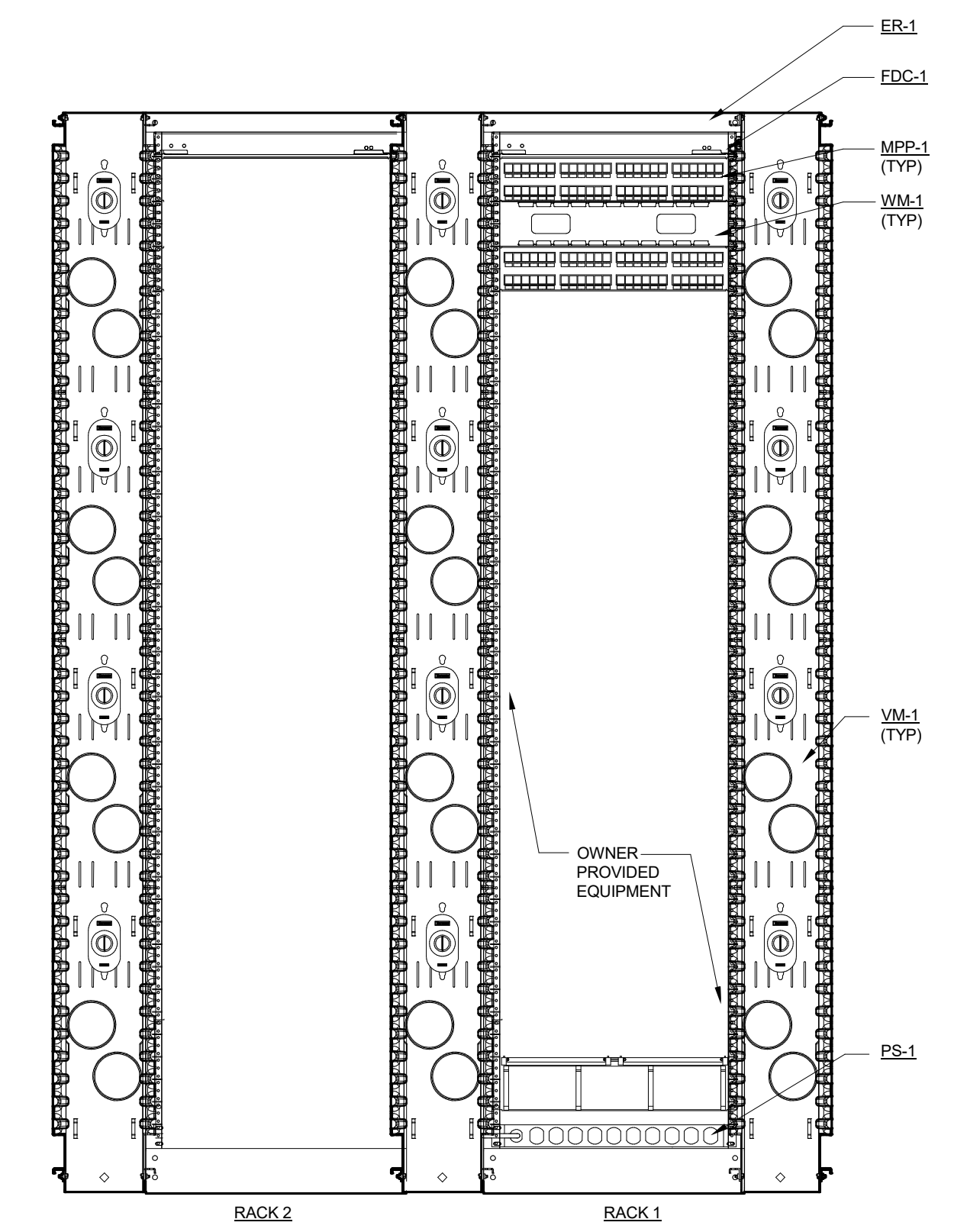


PRINTED

DATE	REMARKS
01/22/2019	OWNER REVIEW SET
03/15/2019	CONSTRUCTION SET

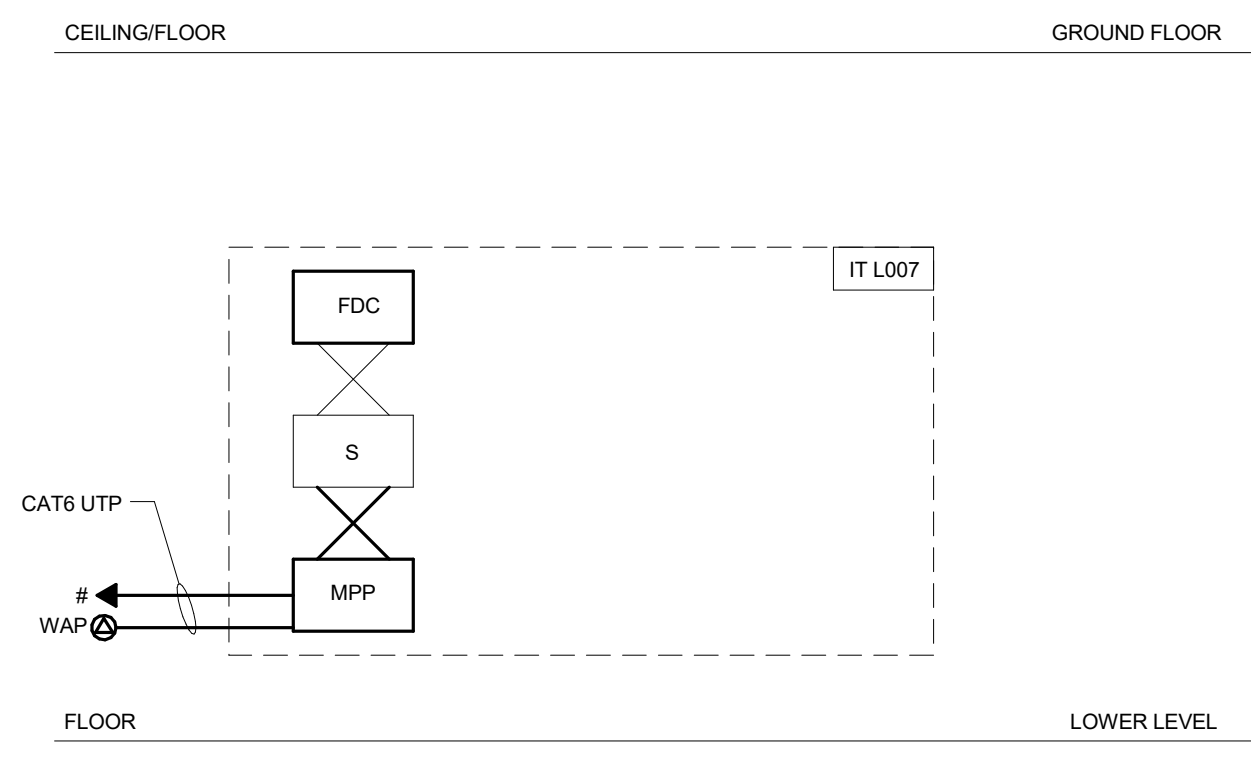
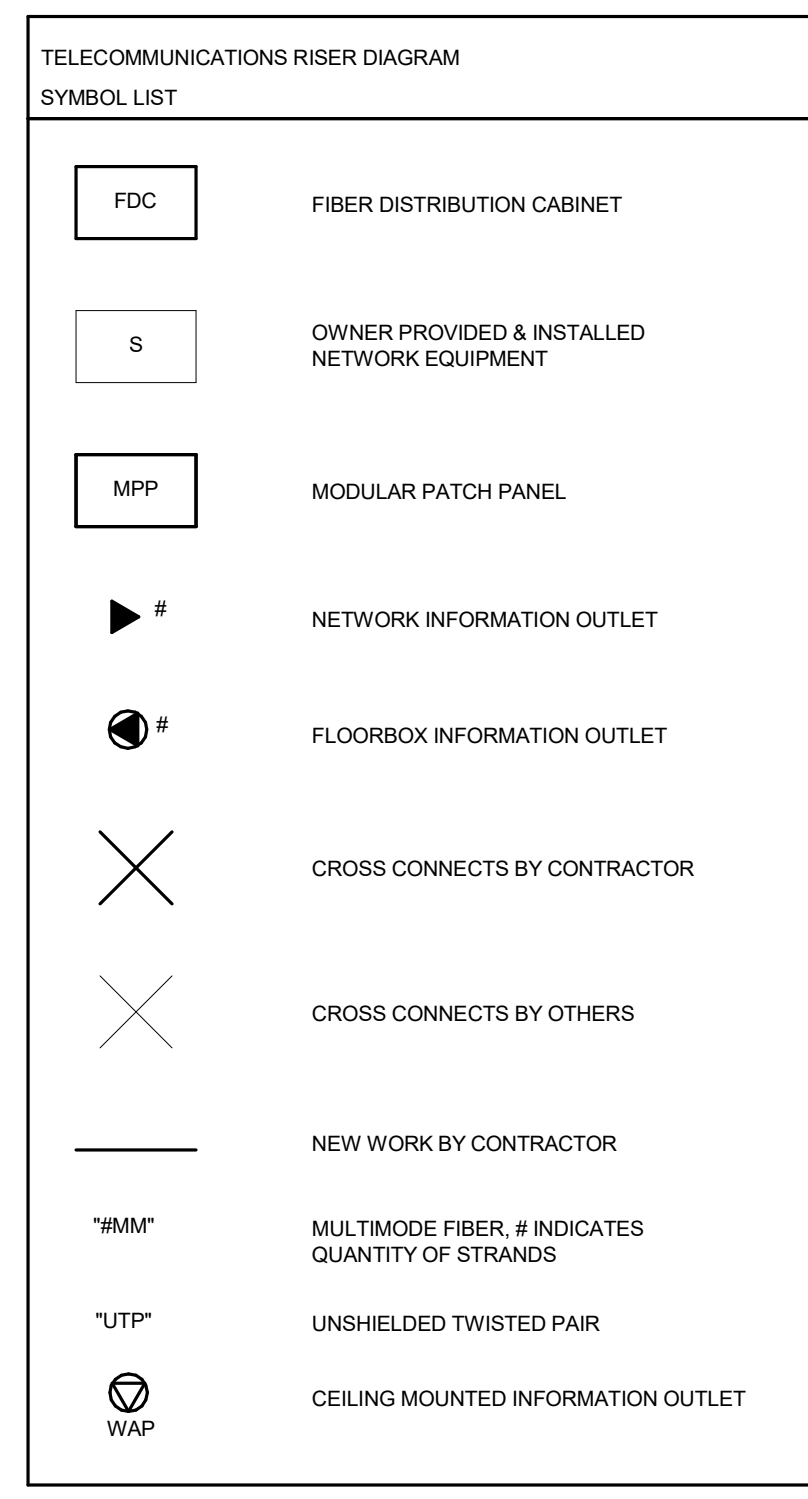
Revision Schedule

Rev#	Description	Date



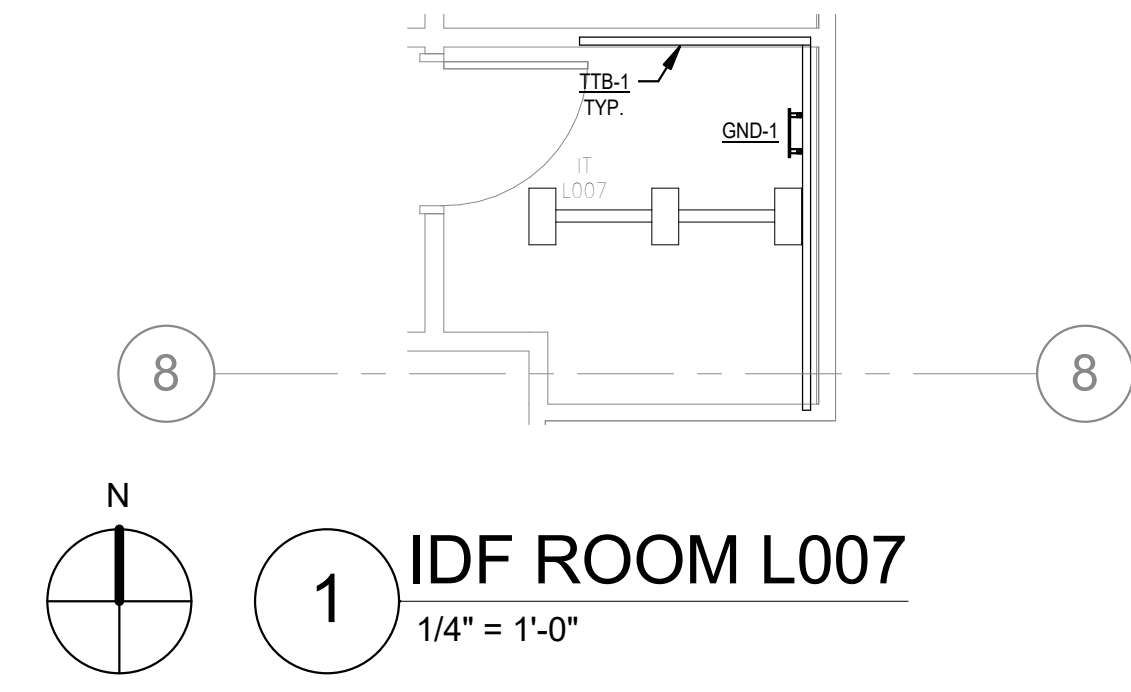
2 RACK ELEVATION - IDF ROOM L007
 N.T.S.

NOTES:
 1. AVAILABLE SPACE IN RACK IS FOR OWNER PROVIDED SWITCHES AND EQUIPMENT. EQUIPMENT PROVIDED BY OWNER'S TELECOM CONTRACTOR.



3 TECHNOLOGY RISER DIAGRAM
 N.T.S.

NOTES:
 1. PROVIDE LADDER RACK WITHIN MDF. THIS LADDER RACK WILL BE SUPPORTED FROM THE CEILING AND/OR WALLS.
 2. CABLING WITHIN THE MDF AND IDF WILL BE ROUTED OVERHEAD IN CONDUIT, LADDER RACKS, AND J-HOOKS.

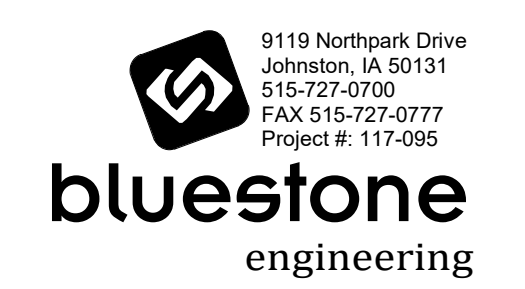


1 IDF ROOM L007
 1/4" = 1'-0"

KEY PLAN

HIAWATHA PUBLIC LIBRARY
 RENOVATION AND EXPANSION
 150 WILLIAM ST
 HIAWATHA, IOWA 52233

TECHNOLOGY ENLARGED PLANS



9119 Northpark Drive
 Johnston, IA 50131
 515-727-0700
 FAX 515-727-0777
 Project #: 117-086

BLUESTONE MEP RESERVES PROPRIETARY RIGHTS INCLUDING COPYRIGHTS TO THIS DRAWING AND THE DATA SHOWN THEREON. SHOWN DRAWING AND DATA ARE THE EXCLUSIVE PROPERTY OF BLUESTONE MEP AND SHALL NOT BE USED OR REPRODUCED FOR ANY OTHER PROJECT WITHOUT THE EXPRESS WRITTEN APPROVAL AND PARTICIPATION OF BLUESTONE MEP. © 2019 BLUESTONE MEP

03/15/2019	T200
17-13400	
DRAWN BY: BSE	
APPROVED BY: BSE	

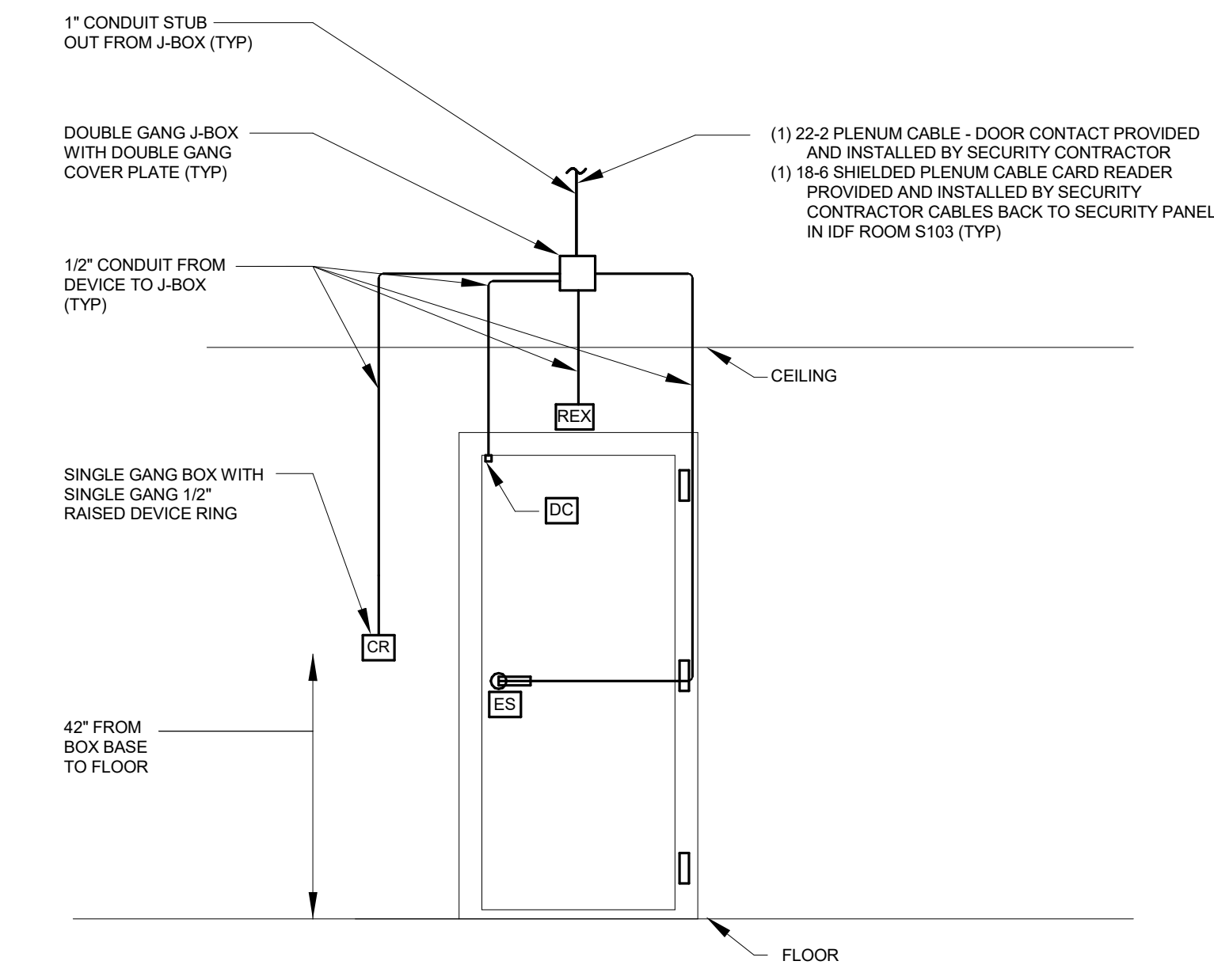


PRINTED

DATE	REMARKS
01/22/2019	OWNER REVIEW SET
03/15/2019	CONSTRUCTION SET

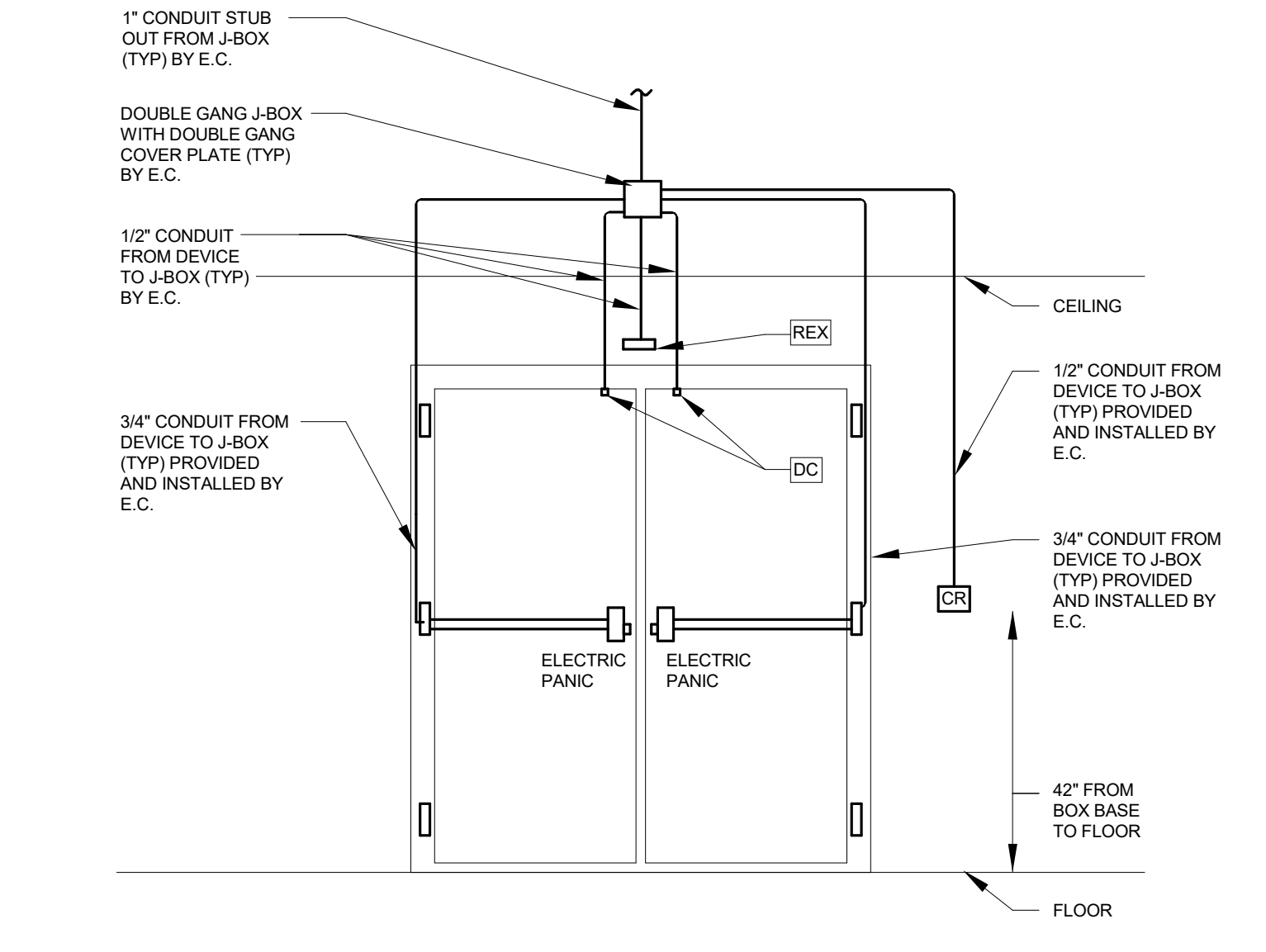
Revision Schedule

Rev#	Description	Date



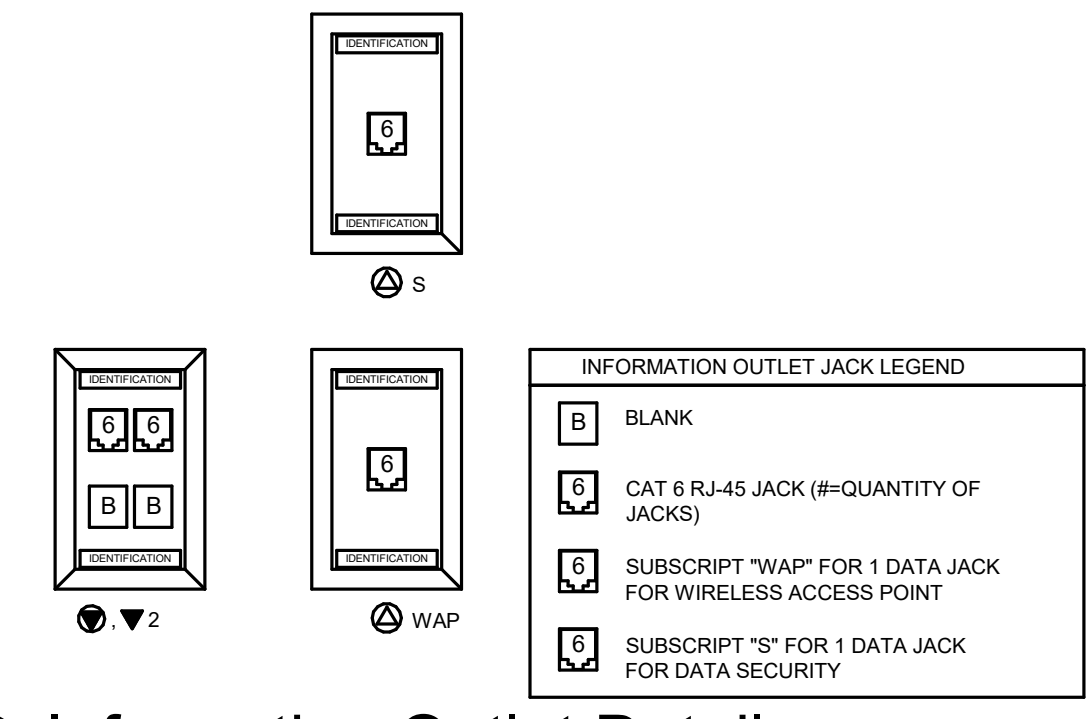
2
 TYPICAL SINGLE DOOR CARD ACCESS,
 DOOR CONTACT, AND ELECTRIC LOCK
 ROUGH-IN
 N.T.S.

- NOTES:
1. PROVIDE AND INSTALL ACCESS CONTROL & DOOR HARDWARE POWER SUPPLY WITH 24V DC. DOOR HARDWARE CONTRACTOR SHALL PROVIDE AND INSTALL 24V FOR DOOR HARDWARE MERCURY SWITCH. E.C. SHALL PROVIDE 120V TO POWER SUPPLIES.



1
 TYPICAL SINGLE DOOR CARD ACCESS,
 DOOR CONTACT, AND ELECTRIC LOCK
 ROUGH-IN
 N.T.S.

- NOTES:
1. THE OWNER'S SECURITY CONTRACTOR SHALL PROVIDE AND INSTALL ACCESS CONTROL POWER SUPPLY WITH 24V DC.

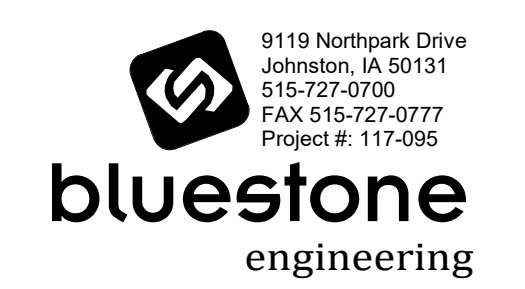


3
 Information Outlet Detail
 N.T.S.

- NOTES:
1. REFER TO SHEET T100 AND T101 FOR LOCATIONS AND QUANTITIES OF INFORMATION OUTLETS.

KEY PLAN

HIAWATHA PUBLIC LIBRARY
 RENOVATION AND EXPANSION
 150 WILLIAM ST
 HIAWATHA, IOWA 52233
 TECHNOLOGY DETAILS



9119 Northpark Drive
 Johnston, IA 50131
 515-727-0700
 FAX 515-727-0777
 Project #: 117-086

BLUESTONE MEP RESERVES PROPRIETARY RIGHTS INCLUDING COPYRIGHTS TO THIS DRAWING AND THE DATA SHOWN THEREON. SHE DRAWING AND DATA ARE THE EXCLUSIVE PROPERTY OF BLUESTONE MEP AND SHALL NOT BE USED OR REPRODUCED FOR ANY OTHER PROJECT WITHOUT THE EXPRESS WRITTEN APPROVAL AND PARTICIPATION OF BLUESTONE MEP. © 2019 BLUESTONE MEP

03/15/2019	T300
17-13400	
DRAWN BY: BSE	
APPROVED BY: BSE	

3/18/2019 1:57:22 PM \\BSEC001\Folder\BSEC001\Bachman\Documents\17-085 - MEP - 17_achman.rvt

ACCESS CONTROL		
SYMBOL	DESCRIPTION	MODEL #
DC	DOOR CONTACT - PROVIDE 1" DIAMETER HOLE IN THE FRAME. SNAP LOCK INSULATION BUSHING FOR TIGHT FIT.	ROUGH-IN ONLY HARDWARE PROVIDED BY OTHERS.
CR	CARD READER - PROVIDE FLUSH SINGLE GANG JUNCTION BOX FOR CARD READER WITH 3/4" C. FROM DEVICE TO JUNCTION BOX TO ABOVE ACCESSIBLE SPACE. MOUNT AT 42" A.F.F.	ROUGH-IN ONLY HARDWARE PROVIDED BY OTHERS.
REX	REQUEST TO EXIT - PROVIDE A FLUSH MOUNTED SINGLE GANG JUNCTION BOX CENTERED 12" ABOVE DOOR FRAME WITH 1/2" C. CONNECTED TO THE DOUBLE GANG JBOX ABOVE THE CEILING.	ROUGH-IN ONLY HARDWARE PROVIDED BY OTHERS.

NETWORK SCHEDULE		
SYMBOL	DESCRIPTION	MODEL #
EB-3	EQUIPMENT RACK 2 POST 84"X23"X33" BLACK	PANOUT R2P
QND-1	PRE-ASSEMBLED BUS COPPER GROUND BAR.	PANOUT GEB0312TP-1 NEWTON INSTRUMENTS ERCO STORM COPPER COMPONENTS GEORGIA COPPER OR AN APPROVED EQUAL
◀	INFORMATION OUTLET (1) 1/4" SQUARE BOX. SINGLE GANG PLASTER RING. FLUSH MOUNT ON WALL OR AS NOTED ON PLANS. SUBSCRIPT "N" QUANTITY OF CAT6 DATA CABLES. REFER TO 3/1300 FOR INFORMATION OUTLET TYPES.	INFORMATION OUTLET- WALL COVERPLATE. PANOUT CFFSL2GTY - OFFICE FURNITURE PANOUT CPE2WY - WALL CPE4WY - WALL C8WH - AV WALL DATA JACK: PANOUT CJB8BTG - DATA CJB8TWH - AV SCALER CJB8BTGL - AV CONTROL
◀	INFORMATION OUTLET MOUNTED IN FLOORBOX PROVIDED BY OTHERS. SUBSCRIPT "N" QUANTITY OF CAT6 DATA CABLES. (AV) QUANTITY OF CAT6 DATA RESERVED FOR AV IN FLOORBOX. REFER TO 3/1300 FOR INFORMATION OUTLET TYPES.	CAT6 JACK - FLOOR BOX: PANOUT W888RBL FACEPLATE FOR RFB2 FLOOR BOX: PANOUT MGRMFW
LR-1	LADDER RACK, 18"W TUBULAR STEEL	CHATSWORTH 10250-418 BLINE COPE OR APPROVED EQUAL TO
MPD-1	ANGLED MODULAR PATCH PANEL 48 PORT.	PANOUT CPLA8WBLY ANGLED
PS-1	POWER STRIP 20A, 5-15P, MOUNTED HORIZONTAL IN RACK.	TRIPLE LIFE P0UMHG
TTB-1	TELECOMMUNICATION TERMINAL BOARD, 3/4" PLYWOOD 4 X 8, PAINTED WHITE WITH FIRE RETARDANT PAINT. REFER TO DRAWING T200 FOR ADDITIONAL INFORMATION.	
VM-1	VERTICAL WIRE MANAGEMENT 6" WIDE, SLACK LOOPS, WITH HINGED DOORS.	PANOUT VMPPHCASE
WAP	WIRELESS INFORMATION OUTLET. SURFACE MOUNT BOX SHALL BE SECURELY SUPPORTED ABOVE CEILING. PROVIDE 2" ADDITIONAL SLACK COILED ABOVE ACCESSIBLE SPACE. REFER TO 3/1300 FOR INFORMATION OUTLET TYPES.	FACEPLATE: PANOUT CBX2IWA JACK: PANOUT CJB8BTGY
WM-1	WIRE MANAGEMENT HORIZONTAL 2 RACK UNITS.	PANOUT VMPPFIE
◀	CEILING INFORMATION OUTLET BOX: (1) CEILING SURFACE MOUNTED BOX SHALL BE SECURELY SUPPORT ABOVE CEILING. SUBSCRIPT "S" QUANTITY OF CAT6 DATA SECURITY. AND SUBSCRIPT REFER TO 3/1300 FOR INFORMATION OUTLET TYPES.	SURFACE MOUNT BOX: PANOUT CBX2IWA DATA JACK: PANOUT CJB8BTGW

ARCHITECT OF RECORD:
FUSION
 ARCHITECTS, INC.
 1950 BOYSSON RD.
 HIAWATHA, IOWA 52233
 319.393.9011
 877.393.9022
 www.Fusion-Architects.com

CONSULTANTS:
CIVIL ENGINEER
HALL & HALL ENGINEERS, INC.
 1860 BOYSSON RD.
 HIAWATHA, IA 52233
 319.362.9548

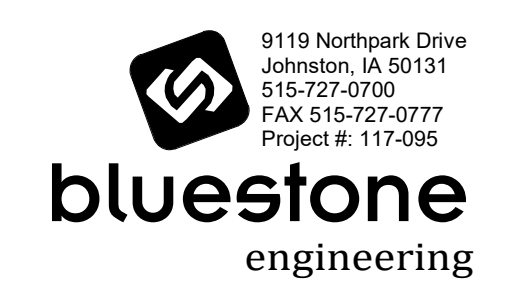
STRUCTURAL / MEP ENGINEER
BLUESTONE ENGINEERING
 9119 NORTH PARK DR.
 JOHNSTON, IA 50131
 515-727-0700



PRINTED	
DATE	REMARKS
01/22/2019	OWNER REVIEW SET
03/15/2019	CONSTRUCTION SET

Revision Schedule		
Rev#	Description	Date

KEY PLAN



BLUESTONE MEP RESERVES PROPRIETARY RIGHTS, INCLUDING COPYRIGHTS, TO THIS DRAWING AND THE DATA SHOWN THEREON. THIS DRAWING AND DATA ARE THE EXCLUSIVE PROPERTY OF BLUESTONE MEP AND SHALL NOT BE USED OR REPRODUCED FOR ANY OTHER PROJECT WITHOUT THE EXPRESS WRITTEN APPROVAL AND PARTICIPATION OF BLUESTONE MEP. © 2019 BLUESTONE MEP

HIAWATHA PUBLIC LIBRARY
 RENOVATION AND EXPANSION
 150 W WILLIAM ST
 HIAWATHA, IOWA 52233
 TECHNOLOGY SCHEDULES

03/15/2019	T500
17-13400	
DRAWN BY: BSE	
APPROVED BY:	